



SCENIC°ECLIPSE

THE WORLD'S FIRST DISCOVERY YACHTS™

2024 ULTRA-LUXURY VOYAGES

The Arctic, Norwegian Fjords,
Europe, the Mediterranean & Americas



sceniceclipse.com

2024

Welcome to the extraordinary

We are delighted to invite you to join us for the voyage of a lifetime, through the most pristine destinations in the Arctic, Norwegian Fjords, Europe, the Mediterranean and Americas. Delve into the heart of remarkable landscapes, unique cultures steeped in history and idyllic islands, where exclusive itineraries and unparalleled experiences await. Every moment of these meticulously crafted voyages will leave you in awe.

With Scenic, it's more than a 6-star ocean cruise. It's a small-ship experience with only up to 228 guests for a truly personalised experience.

It's more than a discovery experience. It's unique exploration of the most majestic destinations by Zodiac, helicopter, submersible, kayak and stand-up paddleboard^.

It's more than a Discovery Team. It's the top experts in their field providing enduring insights and safely guiding you every step of the way.

It's more than exceptional service. It's a world-class crew anticipating your every need, so you can focus on relaxing and discovering your destination.

It's more than an ultra-luxury suite. It's the most spacious suites with indulgent amenities, elegant furnishings and personalised butler service.

It's more than outstanding food and wine. It's a culinary journey with up to 10 dining experiences and a variety of indoor and outdoor bars and lounges.

It's more than healthy choices. It's the benchmark in wellbeing with extensive wellness experiences for the mind, body and soul.

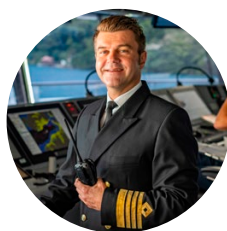
It's more than onshore excursions. It's all-inclusive Scenic Freechoice, exclusive Scenic Enrich and immersive Discovery experiences tailored to your tastes and pace.

It's truly all-inclusive ultra-luxury in a class of its own.

We look forward to welcoming you on board.



James Griffiths
Vice President,
Marine Operations



Senior Captain
Erwan Le Rouzic



Jason Flesher
Director of Discovery Operations



Tom Götter
VP Oceans Hotel Operations



*Dynjandi waterfalls,
Iceland
N 65° 55' W 23° 11'*

WHERE ULTRA-LUXURY MEETS DISCOVERY

Two Helicopters[^]

Soar above the breathtaking landscapes by helicopter and discover the many wonders beyond the horizon.



Kayaks & Stand-up Paddleboards

Discover nature up-close in our tandem kayaks and stand-up paddleboards. Enjoy truly all-inclusive, active explorations.

Observation Lounge

Provides optimal viewing with Swarovski telescopes and a place to relax.

Advanced Heating & Ventilation

Advanced Heating, Ventilation, and Air Conditioning (HVAC) system provides 100% fresh air throughout the Discovery Yachts.

Observation Deck

Spacious Observation Terrace overlooking the front of the yacht with sweeping views.

State-of-the-Art Technology

A strengthened hull, forward bow thrusters and an electronic Azipod propulsion system enable safe navigation.

World-Class Design

Polar Class 6 - designed and built to the latest uncompromising standards for ships operating in Polar waters, for complete comfort and peace of mind.

[^]Helicopter and submersible at additional cost, subject to regulatory approval, availability, weight restrictions, medical approval and weather and ice conditions. *Spa treatments at additional cost. NB: Some images are artist's impressions. Ship featured is Scenic Eclipse

Up to 10 Dining Experiences

Enjoy a culinary journey at up to 10 dining experiences, ranging from casual to fine dining, including 24-hour in suite dining.

GPS Dynamic Positioning System

Maintains the Discovery Yacht's location without dropping anchor onto sensitive seabeds.

Senses Spa

The exclusive Senses Spa boasts 550m² of pure indulgence and tranquility, featuring an extensive menu of luxury treatments*.

Marina

The specially designed marina makes boarding our Zodiacs and kayaks a breeze, as well as access to our warm water activities.



Submersible^

Dive below and explore the delights and mysteries of the deep on an unforgettable excursion in our submersible.

Over-sized Stabilisers

Custom-built stabilisers are 50% larger than other ships. Providing greater stability for navigating waters and disembarking for shore excursions.

Up to Nine Bars & Lounges

With an impressive array of indoor and outdoor spaces, no more than 228 guests, there is plenty of room to relax.

Theatre

The state-of-the-art theatre hosts entertainment, lectures and education programs.

Zodiacs

The fleet of Zodiacs will take you to the heart of your destination.



Welcome to Scenic Eclipse

| | |
|--|----|
| Scenic Eclipse Worldwide Voyage Calendar | 6 |
| Our Commitment to your Health & Safety | 10 |
| The World's First Discovery Yachts | 11 |
| Truly All-Inclusive Ultra-Luxury | 12 |
| Truly All-Inclusive Discovery | 14 |
| Beyond the Horizon | 16 |
| Unrivalled Exploration | 18 |
| Truly All-Inclusive Dining | 20 |
| Truly All-Inclusive Beverages | 22 |
| Indulgent Spaces | 24 |
| Entertainment & Enrichment | 26 |
| Ultra-Luxury Suites | 28 |
| Technology & the Environment | 30 |

2024

The Arctic & Fjords 36

| Date | Days | Cruise | Cruise from | Cruise to | Cruise Mode | Voyage | Page |
|-------------|------|---|--------------|--------------|-------------|--------|------|
| 15 Jun 2024 | 11 | Norwegian Fjords & Lofoten Islands | Leith | Tromsø | Discovery | 401E | 40 |
| 25 Jun 2024 | 18 | Arctic Circle & Northern Europe Discovery: Norway & Iceland | Tromsø | Tromsø | Discovery | 401N | 40 |
| 12 Jul 2024 | 12 | Beyond the Arctic Circle | Tromsø | Longyearbyen | Expedition | 501N | 41 |
| 22 Jul 2024 | 15 | Arctic Islands: Svalbard, Greenland & Iceland | Longyearbyen | Reykjavík | Expedition | 201N | 41 |

Greenland & The High Canadian Arctic 42

| Date | Days | Cruise | Cruise from | Cruise to | Cruise Mode | Voyage | Page |
|-------------|------|---|---------------|---------------|-------------|--------|------|
| 14 Aug 2024 | 10 | Eastern Greenland & Iceland Expedition <small>NEW</small> | Reykjavík | Reykjavík | Expedition | 701N | 44 |
| 23 Aug 2024 | 15 | Greenland Explorer | Reykjavík | Kangerlussuaq | Expedition | 801N | 44 |
| 05 Sep 2024 | 14 | Uncover Greenland & Canada <small>NEW</small> | Kangerlussuaq | Kangerlussuaq | Expedition | 901N | 45 |
| 17 Sep 2024 | 18 | Expedition into Greenland & the High Canadian Arctic | Kangerlussuaq | Halifax | Expedition | 201Y | 45 |

Explore Iceland & Scotland 48

| Date | Days | Cruise | Cruise from | Cruise to | Cruise Mode | Voyage | Page |
|-------------|------|---|-------------|-----------|-------------|--------|------|
| 07 Jun 2024 | 9 | Scottish Isles: Historic Trails & Wilderness <small>NEW</small> | Dublin | Leith | Cruise | 101B | 51 |
| 05 Aug 2024 | 10 | Iceland in Depth | Reykjavík | Reykjavík | Discovery | 601N | 50 |

The Americas 52

| Date | Days | Cruise | Cruise from | Cruise to | Cruise Mode | Voyage | Page |
|-------------|------|--|-------------|------------|-------------|--------|------|
| 12 Oct 2024 | 11 | Bermuda & The Bahamas <small>NEW</small> | New York | Nassau | Discovery | 401J | 53 |
| 24 Oct 2024 | 13 | Island Odyssey: Bahamas to the Grenadines <small>NEW</small> | Nassau | Bridgetown | Discovery | 101J | 53 |

Europe & The Mediterranean 56

| Date | Days | Cruise | Cruise from | Cruise to | Cruise Mode | Voyage | Page |
|-------------|------|---|---------------|-----------|-------------|--------|------|
| 22 Apr 2024 | 11 | Incredible Iberian Discovery | Lisbon | Barcelona | Cruise | 301M | 58 |
| 10 May 2024 | 9 | Italian Treasures <small>NEW</small> | Civitavecchia | Valletta | Cruise | 701M | 58 |
| 28 May 2024 | 11 | Heritage & Traditions of Western Europe | Lisbon | Dublin | Cruise | 301E | 59 |



*Scenic Eclipse,
Svalbard
N 78° 12' E 15° 32'*





Scenic Eclipse I Voyage Calendar - 2024 to 2025

| Date | Days | Voyage Name | Cruise from | Cruise to | Voyage Mode | Voyage Code |
|-------------|------|---|---------------|----------------|-------------|-------------|
| Apr 22 2024 | 11 | Incredible Iberian Discovery | Lisbon | Barcelona | Cruise | 301M |
| May 10 2024 | 9 | Italian Treasures | Civitavecchia | Valletta | Cruise | 701M |
| May 18 2024 | 11 | The Hidden Wonders of the Mediterranean | Valletta | Lisbon | Cruise | 601M |
| May 28 2024 | 11 | Heritage & Traditions of Western Europe | Lisbon | Dublin | Cruise | 301E |
| Jun 07 2024 | 9 | Scottish Isles: Historic Trails & Wilderness | Dublin | Leith | Cruise | 101B |
| Jun 15 2024 | 11 | Norwegian Fjords & Lofoten Islands | Leith | Tromsø | Discovery | 401E |
| Jun 25 2024 | 18 | Arctic Circle & Northern Europe Discovery: Norway & Iceland | Tromsø | Tromsø | Discovery | 401N |
| Jul 12 2024 | 12 | Beyond the Arctic Circle | Tromsø | Longyearbyen | Expedition | 501N |
| Jul 22 2024 | 15 | Arctic Islands: Svalbard, Greenland & Iceland | Longyearbyen | Reykjavík | Expedition | 201N |
| Aug 05 2024 | 10 | Iceland in Depth | Reykjavík | Reykjavík | Discovery | 601N |
| Aug 14 2024 | 10 | Eastern Greenland & Iceland Expedition | Reykjavík | Reykjavík | Expedition | 701N |
| Aug 23 2024 | 15 | Greenland Explorer | Reykjavík | Kangerlussuaq | Expedition | 801N |
| Sep 05 2024 | 14 | Uncover Greenland & Canada | Kangerlussuaq | Kangerlussuaq | Expedition | 901N |
| Sep 17 2024 | 18 | Expedition into Greenland & the High Canadian Arctic | Kangerlussuaq | Halifax | Expedition | 201Y |
| Oct 12 2024 | 13 | Bermuda & The Bahamas | New York | Nassau | Discovery | 401J |
| Oct 24 2024 | 13 | Island Odyssey: Bahamas to the Grenadines | Nassau | Bridgetown | Discovery | 101J |
| Nov 05 2024 | 12 | Crossing the Equator: Barbados to Brazil | Bridgetown | Rio de Janeiro | Discovery | 501R |

*This is a preview calendar and subject to change upon the release of full itineraries.
Please note the departure dates are the date Scenic Eclipse sails. See individual itineraries for details.



| Date | Days | Voyage Name | Cruise from | Cruise to | Voyage Mode | Voyage Code |
|-------------|------|--|----------------|----------------|-------------|-------------|
| Nov 16 2024 | 12 | Rhythms of the Brazilian Coastline | Rio de Janeiro | Buenos Aires | Cruise | 601L |
| Nov 27 2024 | 22 | Antarctica, South Georgia & The Falkland Islands | Buenos Aires | Ushuaia | Expedition | 311S |
| Dec 17 2024 | 13 | Antarctica in Depth (Festive Departure) | Ushuaia | Ushuaia | Expedition | 101S |
| Dec 28 2024 | 13 | Antarctica in Depth (Festive Departure) | Ushuaia | Ushuaia | Expedition | 101S |
| Jan 08 2025 | 13 | Antarctica in Depth | Ushuaia | Ushuaia | Expedition | 101S |
| Jan 19 2025 | 13 | Beyond the Antarctic Circle | Ushuaia | Ushuaia | Expedition | 101S |
| Jan 30 2025 | 20 | Antarctica, South Georgia & The Falkland Islands | Ushuaia | Ushuaia | Expedition | 201S |
| Feb 17 2025 | 13 | Beyond the Antarctic Circle | Ushuaia | Ushuaia | Expedition | 101S |
| Feb 28 2025 | 23 | Antarctica, South Georgia & The Falkland Islands | Ushuaia | Buenos Aires | Expedition | 311S |
| Mar 22 2025 | 13 | Rhythms of the Brazilian Coastline | Buenos Aires | Rio de Janeiro | Cruise | 501L |

For a full list of 2025 voyages visit [scenic.com.au](https://www.scenic.com.au) or contact your local Scenic Travel Advisor



Scenic Eclipse II Voyage Calendar - 2024 to 2025

| Date | Days | Voyage Name | Cruise from | Cruise to | Voyage mode | Voyage code |
|-------------|------|---|-------------|-----------|-------------|-------------|
| Mar 13 2024 | 19 | Journey Across the Pacific: Easter Island & French Polynesia | Valparaíso | Pape'ete | Discovery | 111F |
| Mar 31 2024 | 13 | Reefs & Volcanic Isles: Tahiti to Fiji | Pape'ete | Lautoka | Discovery | 121F |
| Apr 12 2024 | 9 | Mysteries of Melanesia | Lautoka | Sydney | Discovery | 131F |
| Apr 22 2024 | 9 | The Chairman's Voyage: East Coast Islands & Reefs | Newcastle | Cairns | Discovery | 3010 |
| Apr 30 2024 | 11 | Australia's Top End: Cape York & Arnhem Land | Cairns | Darwin | Discovery | 2010 |
| May 10 2024 | 11 | Discover the Kimberley Coastline: An Ancient Wilderness | Darwin | Broome | Discovery | 1010 |
| May 20 2024 | 11 | Uncover the Kimberley Coastline: An Ancient Wilderness | Broome | Darwin | Discovery | 1010 |
| May 30 2024 | 11 | Discover the Kimberley Coastline: An Ancient Wilderness | Darwin | Broome | Discovery | 1010 |
| Jun 09 2024 | 11 | Uncover the Kimberley Coastline: An Ancient Wilderness | Broome | Darwin | Discovery | 1010 |
| Jun 19 2024 | 11 | Discover the Kimberley Coastline: An Ancient Wilderness | Darwin | Broome | Discovery | 1010 |
| Jun 29 2024 | 11 | Uncover the Kimberley Coastline: An Ancient Wilderness | Broome | Darwin | Discovery | 1010 |
| Jul 09 2024 | 11 | Discover the Kimberley Coastline: An Ancient Wilderness | Darwin | Broome | Discovery | 1010 |
| Jul 19 2024 | 11 | Uncover the Kimberley Coastline: An Ancient Wilderness | Broome | Darwin | Discovery | 1010 |
| Jul 29 2024 | 11 | Discover the Kimberley Coastline: An Ancient Wilderness | Darwin | Broome | Discovery | 1010 |
| Aug 08 2024 | 11 | Uncover the Kimberley Coastline: An Ancient Wilderness | Broome | Darwin | Discovery | 1010 |

*This is a preview calendar and subject to change upon the release of full itineraries.
Please note the departure dates are the date Scenic Eclipse sails. See individual itineraries for details.



| Date | Days | Voyage Name | Cruise from | Cruise to | Voyage mode | Voyage code |
|-------------|------|---|---------------|---------------|-------------|-------------|
| Aug 18 2024 | 11 | Discover the Kimberley Coastline: An Ancient Wilderness | Darwin | Broome | Discovery | 1010 |
| Aug 28 2024 | 11 | Uncover the Kimberley Coastline: An Ancient Wilderness | Broome | Darwin | Discovery | 1010 |
| Sep 07 2024 | 13 | Secrets of Indonesia: Spice Islands & Raja Ampat | Darwin | Darwin | Discovery | 401F |
| Sep 19 2024 | 13 | Jewels of Australia's Top End | Darwin | Cairns | Discovery | 501F |
| Oct 01 2024 | 13 | Passage through Melanesia: Solomon Islands & Vanuatu | Cairns | Lautoka | Discovery | 601F |
| Oct 13 2024 | 9 | Lagoons, Reefs & Cultures of the Pacific | Lautoka | Lautoka | Discovery | 701F |
| Oct 21 2024 | 9 | Lagoons, Reefs & Cultures of the Pacific | Lautoka | Lautoka | Discovery | 701F |
| Oct 29 2024 | 11 | Treasures of the Pacific: The Yasawas to New Zealand | Lautoka | Auckland | Discovery | 801F |
| Nov 08 2024 | 13 | Pure New Zealand: North & South Islands | Auckland | Milford Sound | Discovery | 101Q |
| Nov 18 2024 | 18 | New Zealand In Depth | Milford Sound | Auckland | Discovery | 201Q |
| Dec 05 2024 | 13 | Pure New Zealand: North & South Islands | Auckland | Milford Sound | Discovery | 101Q |
| Dec 15 2024 | 25 | Mawson's Antarctica: Along the East Coast | Milford Sound | Hobart | Expedition | 111S |
| Jan 08 2025 | 24 | Antarctica's Ross Sea: Majestic Ice & Wildlife | Hobart | Dunedin | Expedition | 121S |
| Jan 31 2025 | 24 | Antarctica's Ross Sea: Majestic Ice & Wildlife | Dunedin | Dunedin | Expedition | 131S |
| Feb 23 2025 | 12 | New Zealand Delights | Dunedin | Auckland | Cruise | 301Q |
| Mar 06 2025 | 12 | Along the East Coast of Australia: Beaches & the Great Barrier Reef | Auckland | Cairns | Discovery | 4010 |

For a full list of 2025 voyages visit [scenic.com.au](https://www.scenic.com.au) or contact your local Scenic Travel Advisor

Custom-designed with a wealth of world-class features for unrivalled exploration, Scenic Eclipse sets the benchmark in ultra-luxury cruising. As part of our commitment to ensuring the destinations we visit retain their wonder, we've invested in state-of-the-art technology and environmentally sustainable systems, to leave as small a footprint as possible.



Our Commitment to your Health & Safety

We are committed to continuously updating our protocols to go above and beyond the latest health advisory guidelines and regulatory requirements. Our priority is to safeguard the health and safety of our valued guests and crew, so you can travel with complete confidence.

The most recent insights and world-class technologies have been implemented on board Scenic Eclipse. Amongst our extensive range of health and safety measures, Scenic Eclipse is equipped with an advanced Heating, Ventilation and Air-Conditioning (HVAC) system through-out the yacht and in guest suites which provides 100% fresh air through both a UVC and HEPA filter treatment.

For further information on these policies, please visit [scenic.com.au/assurance-oceans](https://www.scenic.com.au/assurance-oceans)



Scenic Eclipse

The World's First Discovery Yachts™



Discovery Yacht Cruising

Scenic Eclipse caters for up to 228 guests (200 guests in Antarctica) featuring an impressive array of indoor and outdoor spaces for an intimate cruising experience. Enjoy up to 10 dining experiences, nine bars and lounges, the indulgent 550m² Senses Spa and a dedicated Observation Lounge and Terrace. Be inspired by lectures from our expert Discovery Team in the state-of-the-art theatre.



World-Class Design

Scenic Eclipse is designed with an unwavering commitment to safety and excellence. The Polar Class 6 rated yachts feature custom-built state-of-the-art technology including customised stabilisers, 50% larger than other ships to provide greater stability, a strengthened hull, forward bow thrusters and an electronic Azipod propulsion system, enabling safe and comfortable navigation.



6-Star Ultra-Luxury

Watch the world go by from your private verandah suite in 6-star luxury. Dedicated butler service is available to every guest, along with an almost 1:1 crew-to-guest ratio. The Comfort Class 1 notation, featuring the highest sound insulation and vibration as per the marine class society Bureau Vista spans throughout all public spaces and suites.



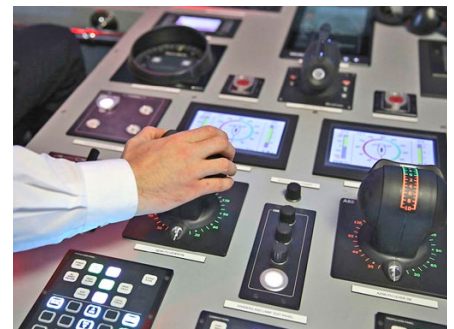
Two Helicopters[^] & a Submersible[^]

Venture beyond the horizon, with Scenic Eclipse's two state-of-the-art Airbus H130-T2 helicopters[^], designed for optimal flightseeing and excursions. Dive below the ocean for the most immersive experience on board our submersible[^], custom-built for sightseeing excursions in crystal clear waters and all that lies in them.



Unrivalled Viewing

Scenic Eclipse has an abundance of space, spanning across 10 luxurious decks, from outdoor areas, to the Sun Terrace on the top deck offering sweeping views, to the spacious Observation Terrace overlooking the front of the Discovery Yacht. The Senses Spa and its Pool Terrace provide relaxing vantage points to spot incredible landmarks and wildlife, ensuring you never miss a moment.



State-of-the-art Technology

Your safety is our highest priority. Scenic Eclipse's state-of-the-art technology includes Safe Return to Port with multiple redundant operating systems. The GPS Dynamic Positioning allows us to maintain our location without dropping anchor onto sensitive seabeds. We have also installed an Advanced Wastewater Treatment system and highly effective engines to reduce emissions, noise and vibrations.

Proud official members of the Association of Antarctica Tour Operators (IAATO) and the Association of Arctic Expedition Cruise Operators (AECO).





Scenic Eclipse

Truly All-Inclusive Ultra-Luxury

Enjoy the voyage of a lifetime and relax as the crew take great pride in attending to your every need. Experience the freedom of being immersed in every moment, as we cruise through magnificent destinations.



When you travel on board Scenic Eclipse, The World's First Discovery Yachts™, you can be confident that every detail of your journey is taken care of by our expert staff and crew, who are highly trained to anticipate your needs.

Each aspect of your comfort and peace of mind has been considered, including your airport transfers and all tipping and gratuities (both on board and onshore), making your cruise truly carefree.

Your expert Discovery Team, regional Discovery Specialists and local guides will ensure every port of call offers moments of fascinating discoveries, be they cultural, historical, natural or culinary.

A Cabanas, Deck 10

B Butler service, Owners Penthouse Suite

C Lumière Champagne Bar

D Relaxation Lounges, Senses Spa[#]

E Koko's Asian Fusion

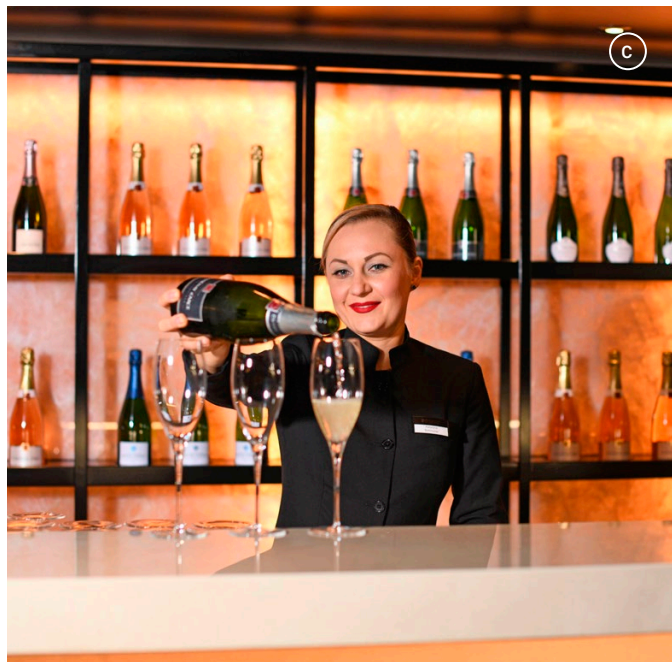
Truly All-Inclusive Services & Amenities

- Only 228 guests on board (200 in Antarctica) for an exclusive small-ship experience
- Spacious all-verandah 6-star luxury suite accommodation
- Butler service for every guest and an almost 1:1 crew-to-guest ratio
- Up to 10 dining experiences, from casual to fine dining
- The finest selection of included premium branded beverages, with a choice of over 100 whiskeys*
- Engaging lecture and education program with on board experts
- Dedicated Observation Lounge & Terrace for optimal viewing opportunities
- On board Swarovski Telescopes and in suite binoculars so you can focus in on every wondrous moment
- Indulgent 550m² Senses Spa[#], gym, yoga and Pilates studio
- Scandinavian inspired outdoor vitality pools and cabanas
- State-of-the-art theatre for daily entertainment and education program
- Complimentary Wi-Fi[^]
- Internal flights and taxes
- Return airport transfers, all tipping on board and on shore



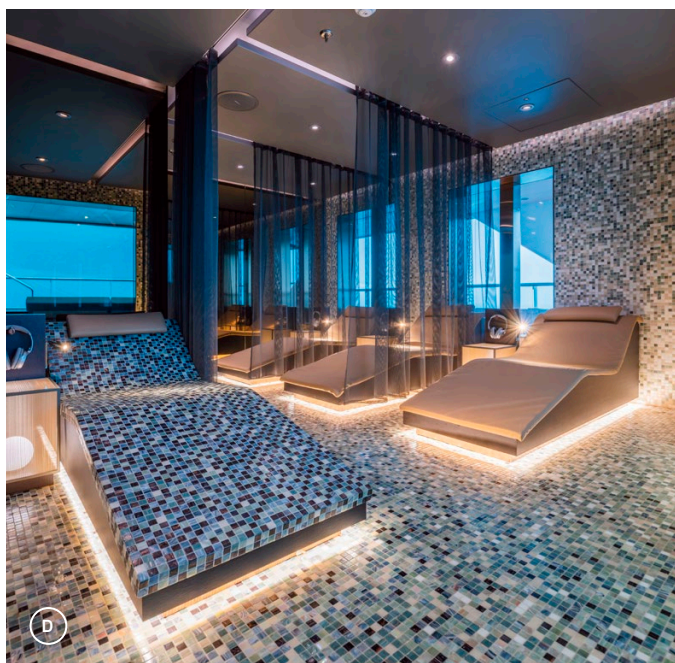
B *Ultra-Luxury Suites with Butler Service*

Every one of the 114 spacious and beautifully designed suites features elegant furnishings, state-of-the-art amenities, a separate sleep zone and lounge area. Watch the world go by from your private verandah or terrace, as your butler pours you a glass of Champagne. It's your ultimate retreat after a day of discovery.



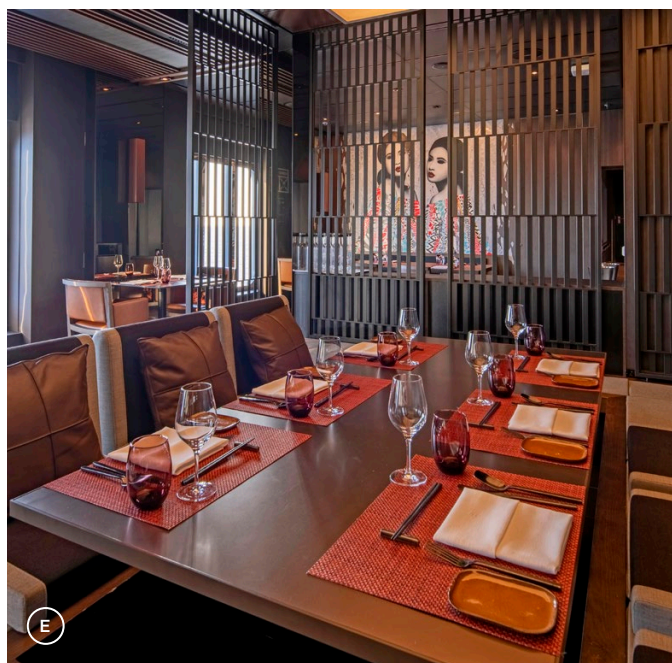
C *Premium Beverages*

Unlimited beverages are included any time of the day. Choose from more than 100 whiskeys from around the world, top-shelf spirits and an extensive selection of fine wines curated by Master of Wine, Keith Isaac*. Enjoy custom-made cocktails or mocktails, a complimentary mini-bar re-stocked daily and a wide range of specialty teas and coffee.



D *Indulgent Spaces*

From the 550m² Senses Spa#, to the gym, yoga and Pilates studio, nine spacious bars and lounges, outdoor terraces, cabanas and multiple pool areas – there is space on board to meet your every need, for the ultimate Discovery Yacht experience.



E *Unrivalled Dining Experiences*

Enjoy up to 10 truly all-inclusive dining experiences ranging from relaxed café style dining to 'by invitation only' private dégustation. New menus are created each day that draw from more than 3,000 recipes to take you on a culinary journey inspired by your destination.

*All drinks on board are included except for a very small number of rare, fine and vintage wines, Champagnes and spirits. ^Limited in remote regions. #Spa treatments at an additional cost.



Scenic Eclipse

Truly All-Inclusive Discovery

Enjoy unrivalled exploration on board Scenic Eclipse. From observing unique wildlife in the Arctic to an exclusive classical concert, our handcrafted experiences and expert Discovery Team will immerse you in remote and extraordinary destinations.



Scenic Expedition Voyages

Unrivalled exploration of extraordinary lands with:

- Up to 20-member specialist Polar Discovery Team
- Engaging lectures and education program with on board experts
- Scenic Discovery Excursions by Zodiac
- Full kayak program and stand-up paddleboarding
- Complimentary expedition parka and water bottle, plus use of special polar boots



Scenic Discovery Voyages

The perfect blend of expedition and cruise voyages with:

- Up to 15-member expert Discovery Team
- Exclusive Scenic Enrich experiences
- Personalised Scenic Freechoice experiences
- Engaging lectures and education program with on board experts
- Scenic Discovery excursions and shore side expedition program
- Full kayak program and stand-up paddleboarding in selected destinations



Scenic Cruise Voyages

Immersive onshore exploration with:

- Exclusive Scenic Enrich experiences
- Personalised Scenic Freechoice excursions
- Entertainment in the state-of-the-art theatre
- Explore by E-bike
- Range of water sporting activities, from snorkelling to water skiing in selected destinations



Scenic Discovery Excursions  

Scenic Discovery excursions offer rich insights and exploration of your chosen destination. Our expert Discovery Team of naturalists, marine biologists, historians, geologists and expert local guides accompany guests and share their knowledge from their local experience, and in-depth research of the region. Cruise on the Zodiacs around ice formations, go on nature walks through the Arctic tundra, snorkel in the clear waters of the Caribbean and kayak along the Brazilian coast.



Scenic Enrich  

Enjoy unique and exclusively handcrafted encounters in the most spectacular surroundings with Scenic Enrich. Savour an exclusive classical concert from the Harpsody Orchestra, performed in one of the historic halls of the Oceanographic Museum, or witness the authentic flamenco ballet production Carmen. Go behind the scenes to enjoy private access and immersive experiences of iconic locations, that take you to the heart of your destination, creating memories that will stay with you forever.

Scenic Freechoice  

Choose from a wide range of Scenic Freechoice activities, meticulously curated to cater to your fitness level and interest. Visit the medieval village of Eze, enjoy a cooking class with fresh du paize pasta, explore Boston by bike, or see the power of Iceland at the Dettifoss Waterfall. From an active to relaxed pace, there's something for everyone.




A Zodiac excursion, Arctic
 B Enrich concert, Reykjavík
 C Snorkelling, Mediterranean


D Exclusive Scenic Enrich event
 E Local Cooking Class, Italy



Scenic Eclipse Beyond the Horizon



WATCH NOW 



See the views from Scenic Eclipse's custom helicopters
scenic.com.au/view/eclipse



Soar above

Let our two state-of-the-art Airbus H130-T2 helicopters^ take you above and beyond the horizon. Custom-designed for flightseeing, they provide treasured views of glistening hidden beaches and towering cliffs in the Mediterranean to spectacular archipelagos that protect the Americas – a perspective few have ever experienced.

These helicopters are one of the quietest aircrafts in the travel industry, with Bose® noise-cancelling headsets creating a quiet ambience. Guests can enjoy the awe-inspiring landscapes as they listen to the pilot's commentary.



Dive below

Scenic Eclipse's customised submersible[^] can seat up to six guests, plus your expert pilot. Dive up to 100 metres underwater to reveal the fascinating marine life and marvel at what lies beneath.

With a revolving seating platform, every spot in the submersible is a front row seat to the action. View reefs, sponges and vast tropical marine life and seabeds decorated with gigantic starfish and exquisite nudibranchs.

- A Scenic helicopter, Monaco, Monte Carlo
- B Scenic helicopter, the Bahamas
- C Scenic Neptune I

[^]Flights on board our two helicopters, helicopter experiences and submersible at additional cost, subject to regulatory approval, availability, weight restrictions, medical approval and weather. Submersible unable to operate in US waters and Svalbard.





Truly all-inclusive

Unrivalled Exploration

Warm Water Activities

During voyages in warmer climates guests can make full use of the multiple water sports equipment available. Explore by kayak, stand-up paddleboard, water skiing or Tiwal Sail boat to discover the breathtaking landscapes and coastlines.



Kayak & Stand-up Paddleboarding

Take your destination discovery further by kayak or stand-up paddleboard. View marine creatures through crystal clear waters just below the surface and enjoy the rush of fresh air on your face and gentle sea spray as you carve your oar through beautiful waters.



Equipped with the very best watercraft, our team will expertly guide you on aquatic activities to help you discover your surrounds in panoramic detail.

Beach Landings

Enjoy remote beach landings on secluded beaches. Relax with a gourmet picnic lunch and bar service, followed by an afternoon of snorkelling, swimming, kayaking and other beach activities.



Zodiacs

The Discovery Team are expert operators of our fleet of Zodiacs. On Expedition and Discovery Voyages the team will guide guests on Zodiac excursions to view stunning coastlines and wildlife, as well as onshore landings.





Scenic Eclipse Discovery Yachts Truly All-Inclusive Dining



*Up to 10 Dining Experiences**

Elements

The main restaurant featuring Italian, steak and seafood

Chef's Table @ Elements

An exclusive invitation to private dégustation dining

Koko's Asian Fusion

Asian fusion restaurant and saké bar

Sushi @ Koko's

A wonderfully authentic Japanese experience

Night Market @ Koko's

Private dining at an authentic Teppanyaki grill

Lumière

Contemporary French fine dining and Champagne Bar

Azure Bar & Café

Relaxed all-day grazing

Yacht Club

Grill restaurant and bar, serving breakfast and lunch

Chef's Garden @ Epicure

Culinary masterclasses and beverage tastings

In-Suite Dining

A comprehensive 24-hour menu



Enjoy a culinary journey with our 6-star, truly all-inclusive dining. Discover the fine creations of the culinary team at up to 10 different dining experiences, ranging from casual to fine dining. Relax, knowing that it's all included. Savour cuisine inspired by the

flavours of the world. Choose from contemporary French fine dining at Lumière, your favourite fillet of steak at elegant Elements main restaurant, or authentic dishes at Night Market @ Koko's, inspired by the food markets of Asia.



Culinary Expertise

Tom Götter, our Vice President, Oceans Hotel Operations, oversees the menu development across all on board dining experiences and manages the Culinary Team which represent 15 nations in the kitchen. Tom has an impressive career in ocean cruising and is excited to share his passion for food and cuisine with you.

- A Elements
- B Yacht Club
- C Koko's Asian Fusion
- D Vice President, Oceans Hotel Operations, Tom Götter

*Not all dining venues operate in all locations.





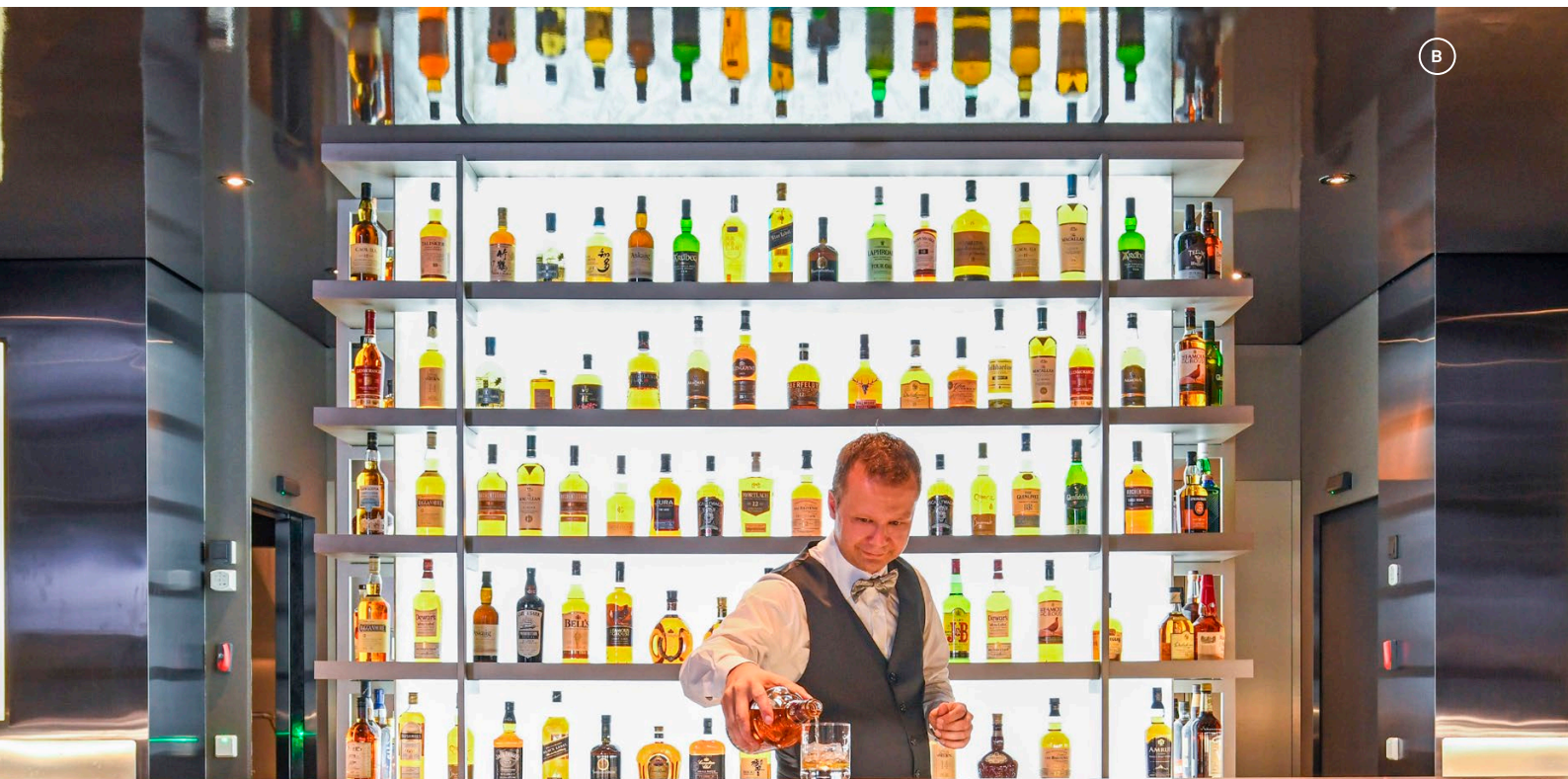
Scenic Eclipse Discovery Yachts A Feast for your Senses



Specialty Dining

With up to 10 dining experiences, you can confidently select your preference to dine when and where the mood strikes. Dine together in the restaurant of your choice or in-suite, after a day of activities – it's up to you.

Small and intimate dining venues on Scenic Eclipse enable you the option of privacy and space at no additional cost. Our private dining experiences include: the Night Market @ Koko's, with an authentic Teppanyaki grill; at Chef's Table for dégustation dining by invitation, with each experience limited to just eight and ten guests, respectively.



Truly All-Inclusive Beverages

- Unlimited complimentary premium beverages*
- Full in-suite mini-bar re-stocked daily
- Still and sparkling water in-suite
- Refillable water bottle for all onshore excursions
- An extensive range of specialty teas and illy coffees

An Unrivalled Selection

Featuring nine spacious bars and lounges, relaxation awaits. Sip a glass of France's finest at Lumière's intimate Champagne bar, indulge in an aged single malt at the elegant Scenic Lounge Bar, enjoy a cocktail at the Sky Bar as you take in the spectacular surrounds or unwind in the Observation Lounge with a specialty tea or coffee.

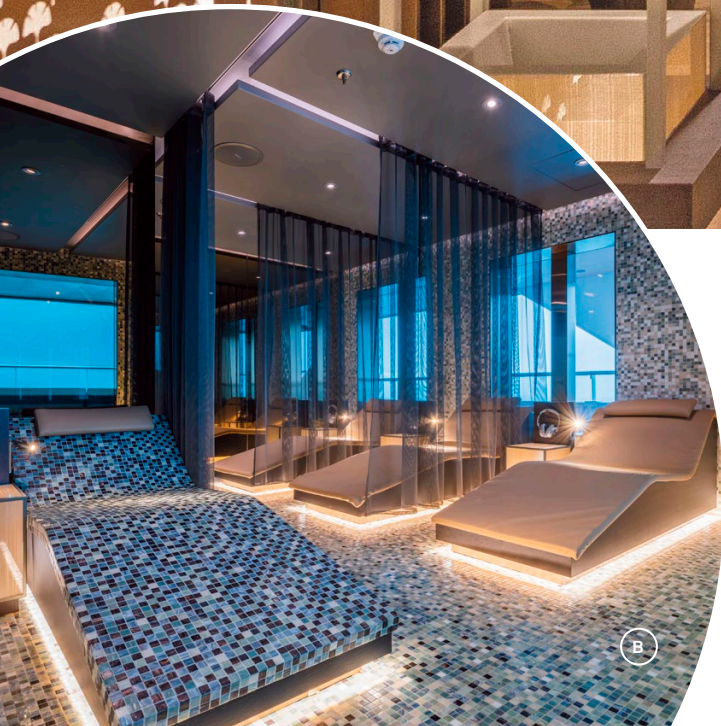
Fancy a gin and tonic as you marvel at majestic landscapes from your private verandah, or a rich cabernet sauvignon with dinner? Complimentary beverages*, including your mini-bar, are part of our signature truly all-inclusive promise. This impressive selection of top-shelf spirits, from your favourite gin, saké or over more than 100 varieties of whiskeys – it's all included all day, every day.

A Lumière B Scenic Whiskey Bar

Not all venues operate in all locations. *All drinks on board are included except for a very small number of rare, fine and vintage wines, Champagnes and spirits.



Scenic Eclipse Discovery Yachts Indulgent Spaces



The Benchmark in Health & Wellbeing

Choose from an extensive menu of ESPA treatments featuring luxurious facials, pedicures, manicures, massages and body treatments[^] – and feel rejuvenated.

Enjoy the included facilities of a sauna, steam and Vitality plunge pools, a relaxation lounge and outdoor pool area. Lie on the unique thermal lounges as your body is purified. You can also choose to add professional services throughout your trip at the hair salon or barber[^].


A Senses Spa reception B Signature thermal lounges C Senses Spa Sauna

[^]At additional cost.

The exclusive Senses Spa on board Scenic Eclipse is a welcoming sanctuary after a day of unforgettable discoveries. Experience a sense of tranquillity from the moment you arrive at its stunning gold leaf reception. The symbol of the Senses Spa is the Ginkgo

leaf, reflecting the beauty, strength and vitality of the Ginkgo tree that is revered throughout Eastern cultures. Just beyond its entrance awaits a luxurious and spacious 550m² retreat where you can be pampered in pure indulgence.



 **All-Inclusive Wellness**

- Women's and men's saunas, steam rooms and relaxation lounges
- Temperature-controlled plunge pools in the Spa
- Signature thermal loungers
- Therapeutic pressure showers
- Pool and Spa Terraces with sun beds
- Yoga and Pilates studio
- Fully-equipped gym

Unrivalled Experiences for Mind, Body & Soul

Offering the only studio of its kind at sea, our PURE: Yoga & Pilates studio on Deck 7 is complimentary for your use. Attend included classes or one-on-one sessions[^] with our instructors for a personalised experience. Attain a zen-like state after a yoga or meditation session, or strengthen your core with Pilates. New holistic therapy sessions include Aerial Yoga, TRX, Mindfulness meditation and Tibetan sound bowl healing classes. Maintain your physical fitness at the POWER: Gym. Personalised, one-on-one fitness coaching sessions are available[^].





Truly all-inclusive

Entertainment & Enrichment

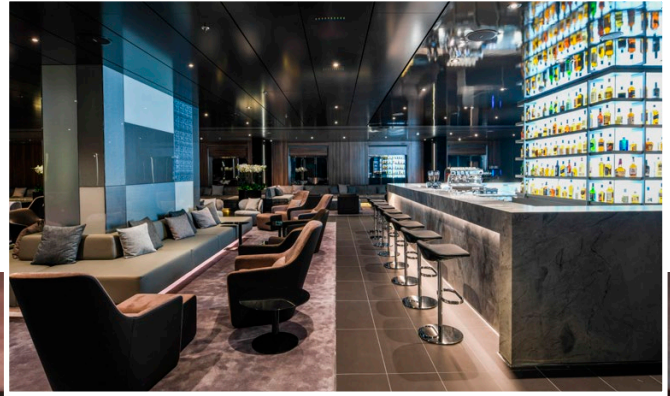
State-of-the-Art Theatre

Gain insights into the regions you're visiting during regular lectures and information sessions, hosted by expert Discovery Team members, Captain and crew in the world-class theatre. Here, guests can also enjoy nightly musical performances spanning a range of genres.



Scenic Lounge & Bar

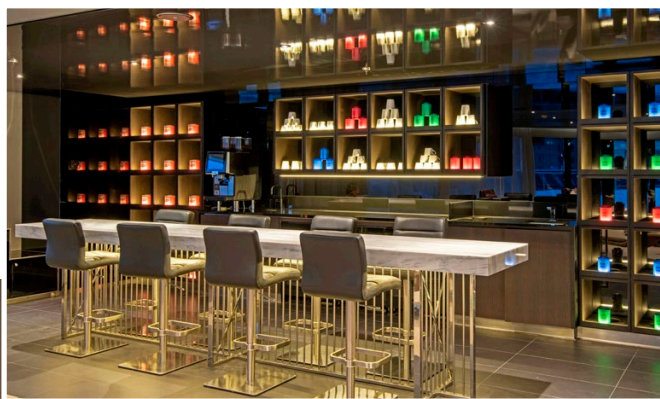
Mingle with new friends and share your days discoveries at the Scenic Lounge & Bar. Let our bartenders guide you towards your premium beverage of choice, be it Champagne, wine, whiskey, cocktails, an afternoon espresso or an after-dinner liqueur.



For both entertainment and enrichment, the multiple indulgent indoor spaces on board Scenic Eclipse cater to all your interests. Play a game or read in the library, be entertained in the theatre or visit the navigational hub of the yacht.

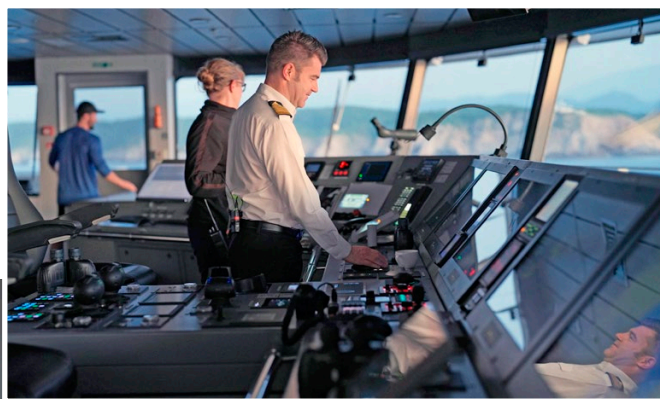
Observation Lounge

In the quiet of the Observation Lounge and library, you can recline into leather seating and read a book, play board games as you enjoy a specialty tea or coffee. Take a closer look at landscapes and wildlife as you pass them through the Swarovski telescopes.



Open Bridge

Venture to the bridge and see Scenic Eclipse in full operation. The open bridge policy provides guests access to one of the best viewing areas on the ship, as well as the opportunity to learn about the technical abilities of The World's First Discovery Yachts™.



Observation Lounge



Scenic Eclipse Discovery Yachts Ultra-Luxury Suites



Owner's Penthouse Suites

An enormous 195m²

Redefining luxury, your private retreat features a separate lounge and dining area, a super-sized bathroom and private jacuzzi on the spacious terrace. Extraordinary in every regard, staying in one of only two of these suites is the ultimate indulgence.

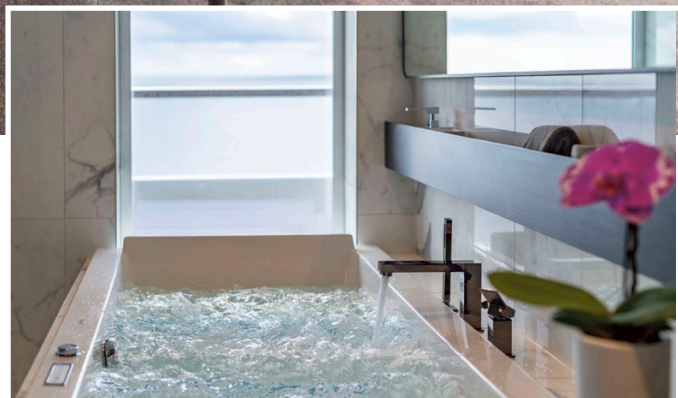
Panorama Suites

Ranging in size from 105-110m²

Grandeur and style are taken to a whole new level in our Panorama and Grand Panorama Suites. Overlooking the bow of the yacht and with spacious curved terraces, a separate lounge and dining area and reading alcove, these suites will surpass your expectations.

Scenic Eclipse has set the standard in ultra-luxury cruising with 114 luxurious suites across five decks. Designed as your own indulgent haven, each suite is incredibly spacious and filled with natural light, with floor-to-ceiling sliding doors opening onto your private verandah or terrace.

From the generous 32m² Verandah Suites to the 245m² Two-bedroom Penthouse Suite, the beautiful accommodation features butler service, elegant furnishings, state-of-the-art amenities, separate sleep zone and lounge area, and more to enhance your experience. It's your ultimate retreat after a day of discovery.



Spa Suites

Ranging in size from 46-50m²

With a premier location on the ship, the opulence of our spacious Spa Suites includes a four-poster king-size Scenic Slumber Bed, separate living room and lounge, a private verandah and a signature double-size Philippe Starck-designed spa bath. They're the perfect hideaway.

Verandah Suites

Ranging in size from 32-40m²

All three Verandah Suite categories offer a private retreat where you will be ensconced in all-inclusive luxury. Each suite includes a private verandah, luxury king-size Scenic Slumber Bed, separate lounge area and butler service.



Scenic Eclipse Discovery Yachts Technology & the Environment



Our Commitment to a Sustainable Future

At Scenic, we are committed to environmentally responsible tourism and protecting the places we visit, to ensure we can continue to offer our guests amazing experiences to explore all the natural beauty this planet has to offer.

Scenic's aim is to reduce the environmental impact and to ensure that collectively, we build a sustainable way of operating and conducting business. By making a positive contribution to the communities where we source, live, work and sell a vast range of products - both through our core business and initiatives - we will deliver economic benefits to the local people and enhance the wellbeing of host communities.

At its core, our business depends on the beauty and sustainability of the planet and its people. While Scenic guests want to explore and discover new cultures, we are striving to ensure that our impact on these destinations is minimal.

By working with local governments, tourism authorities, local communities and guests, we can ensure the interaction is mutually beneficial, whilst safeguarding the natural environment.

Scenic Eclipse, The World's First Discovery Yachts™ travel to some of the most beautiful and remote regions on the planet. As part of our commitment to ensuring these destinations retain their wonder, we've invested in state-of-the-art technology and environmentally sustainable systems, to leave as

small a footprint as possible. Your safety is our highest priority and the Scenic Eclipse yachts have been built to ensure the highest international safety standards. The dedication to your health, safety and the environment allows us to design the most inspiring and exciting itineraries possible.



Uncompromising Peace of Mind Safety, Comfort, Environment

- Polar Class 6 – designed and built to the latest uncompromising standards for ships operating in Polar waters
- Comfort Class 1 notation - featuring lowest passenger ship noise and vibration throughout public spaces and suites
- Largest space to guest ratios of almost 1:1 in the industry allowing for an abundance of personal space and social distancing
- Strengthened Hull, forward bow thrusters and an electronic Azipod propulsion system enables safe navigation through Arctic and Antarctic waters
- Advanced Kongsberg automated safety systems Safe return to Port compliant with multiple redundant main operating systems - the highest level of safety
- Oversized Zero Speed stabilisers – custom-built and 50% larger than those of other ships providing greater stability as it navigates the waters
- GPS Dynamic Positioning system - allows Scenic Eclipse to maintain our location without dropping anchor onto sensitive seabeds
- The advanced emissions technology and IMO low sulphur fuel Advanced Wastewater Treatment Systems Highly efficient engines, reduce emissions, noise and vibrations
- Proud official members of IAATO and AECO international associations



A State-of-the-art Bridge B Scenic Eclipse, Arctic



Association of
Arctic Expedition Cruise
Operators **AECO**



Scenic Eclipse Expedition Voyages



The Expedition Experience

An Expedition Voyage on board Scenic Eclipse is in a class of its own. Your truly all-inclusive Scenic Discovery Excursions will be led by an expert Discovery Team of up to 20-members such as naturalists, marine biologists, archaeologists, historians, and glaciologists. Your custom parka and polar boots will be professionally fitted in the Discovery Centre before you are guided by the Discovery Team on land and sea. Learn about polar wildlife and landscapes during enriching lectures and education programs hosted in the Discovery Yacht's impressive state-of-the-art theatre.



The Benchmark in Ultra-Luxury Expedition Cruises

Scenic Eclipse yachts have been purpose-built for Expedition Voyages into these ecologically spectacular destinations. Designed with a Polar Class 6-classification, the Discovery Yacht's state-of-the-art technological features include a strengthened hull, forward bow thrusters and an electronic Azipod propulsion system that enables comfortable and safe expeditions. The GPS Dynamic Positioning system allows the ship to maintain its location without dropping anchor onto ecologically sensitive seabeds. With only up to 228 guests (200 in Antarctica) on board, you will enjoy multiple shore landings via Zodiac onto ice beds, making the most of your precious stops in these once-in-a-lifetime locations.

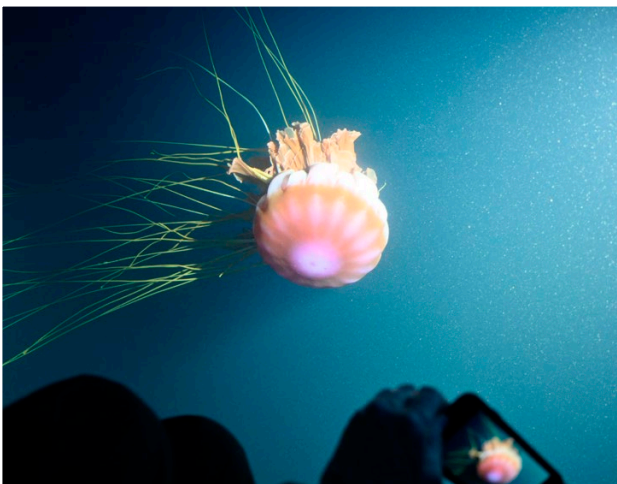


Scenic Eclipse Expert Discovery Team



Expert Discovery Team

The Discovery Team is the core of our Expedition Voyages, with up to 20 expert members who will guide you and enrich your understanding of each destination. With credentials and qualifications that span such disciplines as science, geology, botany, history, photography, archaeology, anthropology, marine biology, and glaciology – each guest in these Polar regions will feel like they have their own personal expert guide to answer the most curious and technical questions.



A Voyage of Discovery

Step effortlessly into a Zodiac to alight safely onto ice beds and walk ashore. Join the Discovery Team as they set up stand-up paddleboards for you to feel the thrill of slicing your own oar blade through the purest of waters. For the ultimate expedition experience, choose to soar above and dive below the horizon. Take to the skies in one of two helicopters[^], soaring above to view the regions in panoramic detail; or delve below the surface in our custom-built submersible[^]. When on board, regular lectures and information sessions will be hosted in the state-of-the-art theatre; or listen out for moments of wildlife spotting, viewing through your personal in-suite binoculars or Swarovski telescopes in the Observation Lounge.



Zodiac Excursion



Discovery Centre, Scenic Eclipse



Easy access to Zodiacs

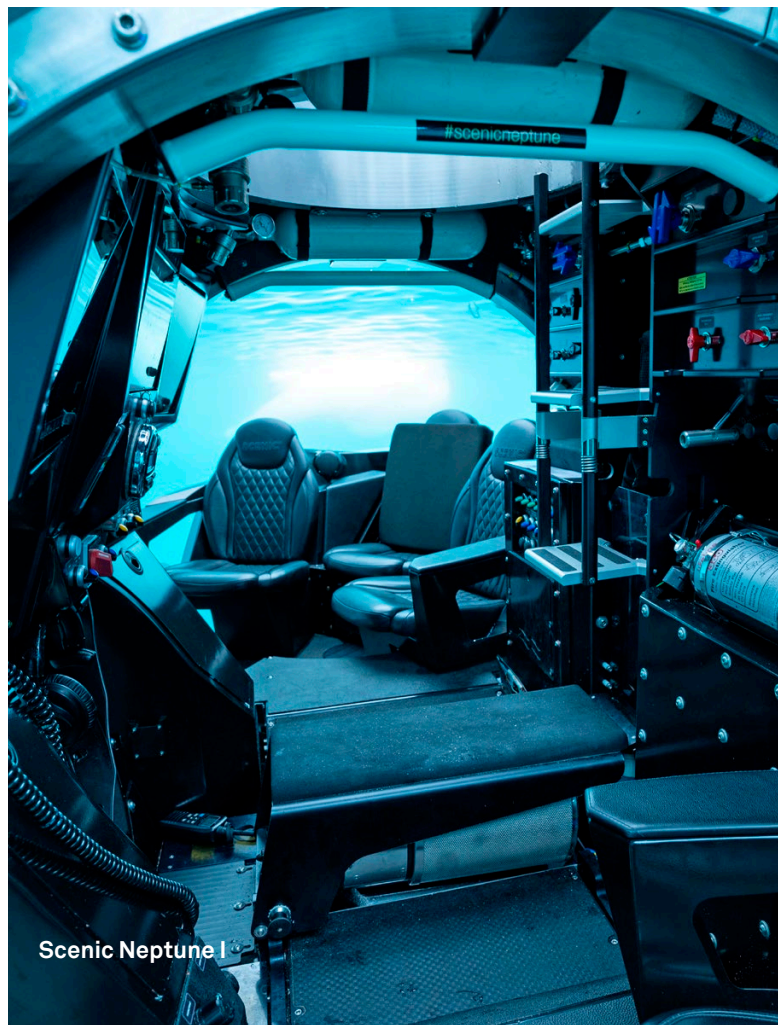
Leading the Way

The Discovery Team is hand-selected and carefully curated for each voyage and destination according to their areas of expertise, to help best bring the regions to life in vivid detail. For the entire Discovery Team, their work is far more than a job – it's a true, vocational calling that is made all the more meaningful to each of them by their ability to share natural, cultural and wildlife highlights with our guests.

Invaluable Expertise

Despite the many years' of experience and intimate knowledge of all team members, their enthusiasm and joy is ever-present when helping you spot whales or seals. Every day on these waters is different and unscripted. Their expertise is invaluable in ensuring your expedition experience is more than sightseeing by providing a well-rounded understanding of the context and the environment in which you are exploring.

*Helicopters and submersible experiences at additional cost, subject to regulatory approval, availability, weight restrictions, medical approval and weather and ice conditions. Helicopter is unable to operate in Svalbard. Submersible is unable to operate in Svalbard and in US waters.



Scenic Neptune I

° ARCTIC & FJORDS

From the majestic fjords of Norway to Greenland's glaciers and the intriguing geology of Iceland, a voyage to the Arctic is unlike any other. The Arctic region is a magical land where the sun stays up above the horizon well past midnight in the summer. Tales of brave Viking warriors are still shared over an evening drink, and spot the majestic wildlife roaming the land.

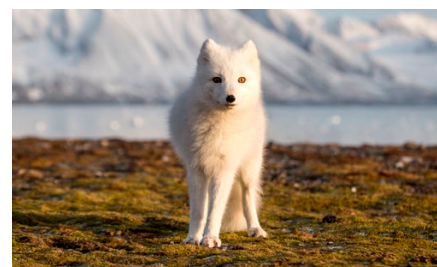


*Seven Sisters waterfall,
Geirangerfjord, Norway
N 62° 06' E 06° 58'*



Norwegian Fjords

The dramatic fjords are remnants of millions of years of glaciation – a true natural masterpiece. Foaming waterfalls, steep precipices, rugged mountains and verdant pastures.



Svalbard

Halfway between Norway and the North Pole lies an enchanting archipelago swept by warm waters along its west coast; frigid pack ice from the north, polar desert winds from the east and lush sea breezes from the south.



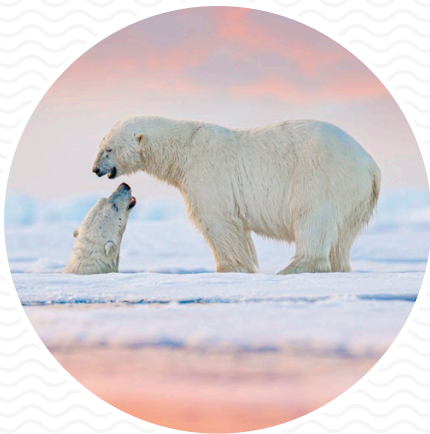
Greenland

Wilderness takes on a whole new meaning in the largest island of the world. A land of fjords and glaciers, Greenland is the perfect place for an expedition voyage. The country's unique blend of Danish and Inuit heritage has created a rich culture worth exploring.



Iceland

The land of fire and ice, Iceland boasts sprawling icefields and gushing geysers in equal measure. Explore the striking landscapes filled with glaciers and volcanoes with a Discovery Team member and be immersed in the distinctive Icelandic culture.



Canada

Greenland

Kangerlussuaq

Longyearbyen

Svalbard

Arctic Ocean

Tromsø

Iceland

Reykjavík

Norway

Bergen

Scotland

Dublin

Ireland

Scenic Eclipse Seasonal Guide

Arctic Region

Feel anticipation and excitement as you cruise through one of the least explored regions of the world. Be amazed by the paramount beauty of the landscape and light in the Arctic region, with unique wildlife taking it to a new level of exploration.

Comprising of many regions across Europe, North America and Asia, the Arctic is the northernmost part of our planet.

The European continent enjoys wild Scottish isles, Norwegian fjords and photogenic fishing villages; Svalbard's colourful tundra, reindeer, polar bears and walrus; Greenland's spectacular icebergs and glacier-carved valleys, musk ox and paleo-Eskimo camps. Discover Iceland's awe-inspiring waterfalls, Viking heritage, evocative volcanic landscapes and rejuvenating thermal pools.

The North American continent includes the spectacular kilometres-high vertical walls along the Baffin Island coast that sits completely above the Arctic Circle.

Across the top of the Asian continent is the legendary Northeast Passage, until recently the domain of nuclear-powered icebreakers most of the year, but thanks to climate change, can be ice-free in summer.

The Arctic region is best known for polar bears. Polar bears are marine mammals that spend most of their lives on Arctic Ocean sea ice hunting seals, walrus, even whales in the frigid waters, but come ashore to give birth to their cubs.



As well as Arctic destinations, here are some seasonal highlights to help you decide which voyage to choose:

Early Summer

June – Early July

Humpback whales follow the Gulf Stream north from Scotland to Iceland and along the Norwegian coast, while fast ice breaks out of the deeper fjords. Snow free areas across the Arctic attract migratory birds, and polar bears and cubs emerge from dens. On seabird cliffs in Scotland, Iceland and Norway, guests can search for puffins, gannets and guillemots feed their chicks.

Midsummer

Mid July – Early August

Millions of migratory birds fill flyways in Europe and North America. Seabird cliffs are noisy with growing chicks attracting Arctic fox (Iceland's only native land animal). Osprey raise chicks and grey seals pup along the Scottish coast. Algal blooms attract ringed, bearded and harp seals in the high Arctic, and on Wrangel Island and across Canada, polar bears teach cubs to hunt. Spectacular Arctic wildflowers bloom and walrus crowd ice floes as polar bears stalk seals in pack ice around Svalbard.

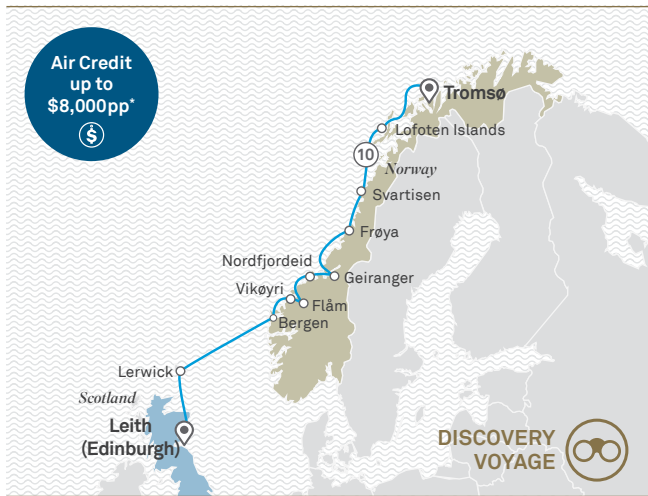
Late Summer

Mid August – Early September

Open waters unlock the Northeast Passage, with access to polar bears hunting seals and walrus in pack ice. Humpback, bowhead, grey and beluga whales feed before migrating south. Grey seals give birth to pups in Scotland and across the high Arctic, shorebirds and seabirds complete their moult and prepare to head south. Arctic foxes scour the base of seabird cliffs in search for late-season chicks. Warm daytime temperatures encourage spectacular calving of glacier fronts, tundra walks turn up ripe berries and sunsets begin to light up the evening sky.

Norwegian Fjords & Lofoten Islands

🕒 11 Day Cruise 📍 Leith > Tromsø



— Cruise 📍 Cruise start/finish ① Overnight stay

Fjords of the Vikings

Cascading waterfalls and snow capped mountains, remote towns and picturesque fishing villages. Norway is a delight to behold. Cruise through magnificent fjords, including Sognefjord and Geirangerfjord, surrounded by dramatic peaks and steep mountains. Relax as your Discovery Yacht effortlessly weaves its way like the longboard of the Vikings once did.

| | | | |
|-------|-----------------------------|--------|-----------------|
| Day 1 | Leith (Edinburgh), Scotland | Day 6 | Nordfjordeid |
| Day 2 | At sea | Day 7 | Geiranger |
| Day 3 | Lerwick | Day 8 | Frøya |
| Day 4 | Bergen, Norway | Day 9 | Svartisen |
| Day 5 | Vikøyri > Flåm | Day 10 | Lofoten Islands |
| | | Day 11 | Tromsø |



Voyage 401E: Jun 15 2024

Scenic Select Bonus Savings

Verandah Suite from \$16,715* per person

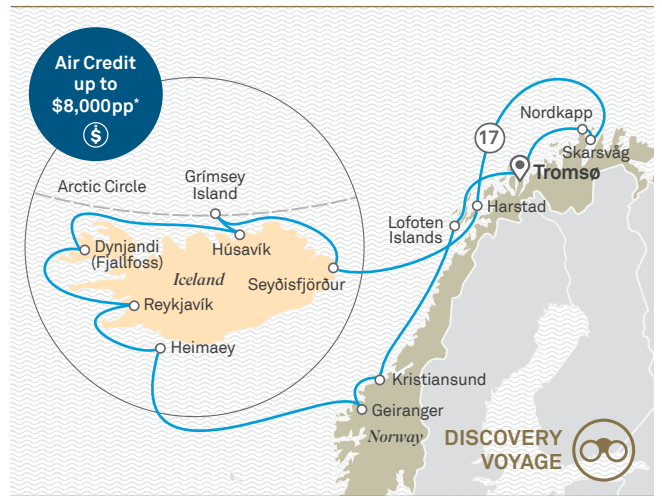
Spa Suite from \$25,965* per person

Prices are based on Scenic Select Bonus Savings for Jun 15 2024 departure. For current prices and offers for each suite category, visit scenic.com.au or see your travel advisor.

Strictly Limited Scenic Select Bonus Savings: Full payment 10 months prior to departure or at time of booking if less than 10 months prior to departure. Economy Airfare Credit up to the value of \$2,800pp when you book Verandah Suites or, Business Airfare Credit up to the value of \$8,000pp when you book Spa Suites or higher. Alternate Air Credit available. **Deposit per person (required within 7 days of booking):** 10% of cruise fare. All prices listed are per person, twin share and include taxes and charges, international flights are not included. Single Supplement price on application. Prices are correct as of 10 November 2023, please note a fuel surcharge may be applicable at time of full payment. For full terms and conditions refer to pages 60-63.

Arctic Circle & Northern Europe Discovery: Norway & Iceland

🕒 18 Day Cruise 📍 Tromsø > Tromsø **NEW**



— Cruise 📍 Cruise start/finish ① Overnight stay

Awe-Inspiring Arctic

Leave the world you know behind on this 18-day voyage in Norway and Iceland where you'll sail through towering fjords, marvel at the contrasting landscapes, walk cobblestoned streets in historic towns and spot wildlife.

| | | | |
|---------|---|-----------|--------------------------|
| Day 1 | Tromsø, Norway | Day 10 | Reykjavik |
| Day 2 | Cruising North Cape (Nordkapp) > Skarsvåg | Day 11 | Heimaey, Westman Islands |
| Day 3-4 | Harstad | Day 12-13 | At sea |
| Day 5 | At sea | Day 14 | Geiranger, Norway |
| Day 6 | Seyðisfjörður, Iceland | Day 15 | Kristiansund |
| Day 7 | Grimsey Island | Day 16 | Reine, Lofoten Islands |
| Day 8 | Húsavík | Day 17 | Leknes, Lofoten Islands |
| Day 9 | Dynjandi (Fjallfoss) | Day 18 | Tromsø |



Voyage 401N: Jun 25 2024

Scenic Select Bonus Savings

Verandah Suite from \$28,065* per person

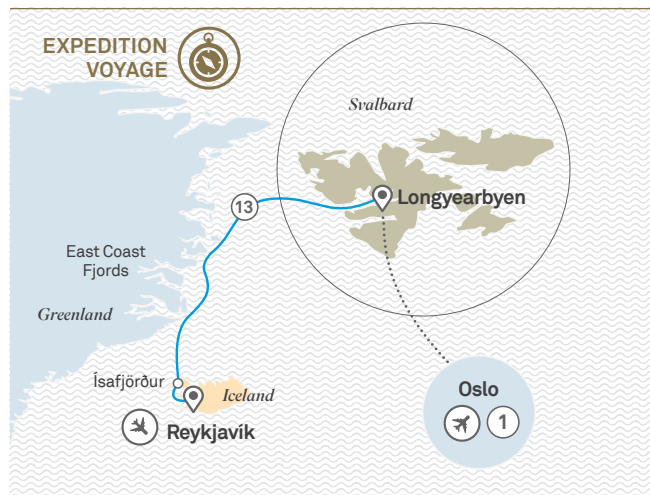
Spa Suite from \$42,590* per person

Prices are based on Scenic Select Bonus Savings for Jun 25 2024 departure. For current prices and offers for each suite category, visit scenic.com.au or see your travel advisor.

Strictly Limited Scenic Select Bonus Savings: Full payment 10 months prior to departure or at time of booking if less than 10 months prior to departure. Economy Airfare Credit up to the value of \$2,800pp when you book Verandah Suites or, Business Airfare Credit up to the value of \$8,000pp when you book Spa Suites or higher. Alternate Air Credit available. **Deposit per person (required within 7 days of booking):** 10% of cruise fare. All prices listed are per person, twin share and include taxes and charges, international flights are not included. Single Supplement price on application. Prices are correct as of 10 November 2023, please note a fuel surcharge may be applicable at time of full payment. For full terms and conditions refer to pages 60-63.

Arctic Islands: Svalbard, Greenland & Iceland

🕒 15 Day Cruise 📍 Oslo > Reykjavik **NEW**



— Cruise 📍 Cruise start/finish Included flight ① Overnight stay

On Top of the World

Marvel at the unique scenery and search for Arctic wildlife. Greenland's East Coast is the world's largest national park and fjord system. You'll sail past pristine glaciers and thundering waterfalls, before ending your extraordinary voyage in the Land of Fire and Ice.

| | | | |
|---------|-------------------------------|----------|--------------------------------|
| Day 1 | Oslo, Norway | Day 8-12 | East Coast Fjords of Greenland |
| Day 2 | Oslo > Longyearbyen, Svalbard | Day 13 | At Sea |
| Day 3-6 | Svalbard Archipelago | Day 14 | Ísafjörður, Iceland |
| Day 7 | At Sea | Day 15 | Reykjavik |

The itineraries on this page are a guide only and may be amended for operational reasons. As such Scenic cannot guarantee the cruises will operate unaltered from the itineraries stated above. For full terms and conditions refer to pages 60-63.



Voyage 201N: Jul 22 2024

Scenic Select Savings

Verandah Suite from \$27,085* per person

Spa Suite SOLD OUT

Prices are based on Scenic Select Savings for Jul 22 2024 departure. For current prices and offers for each suite category, visit scenic.com.au or see your travel advisor.

Strictly Limited Scenic Select Savings: Full payment 10 months prior to departure or at time of booking if less than 10 months prior to departure. **Deposit per person (required within 7 days of booking):** 10% of cruise fare. Single Supplement price on application. All prices listed are per person, twin share and include taxes and charges, international flights are not included. Prices are correct as of 10 November 2023, please note a fuel surcharge may be applicable at time of full payment. **Helicopters and submersible will not operate in Svalbard.** For full terms and conditions refer to pages 60-63.

Beyond the Arctic Circle

🕒 12 Day Cruise 📍 Tromsø > Oslo

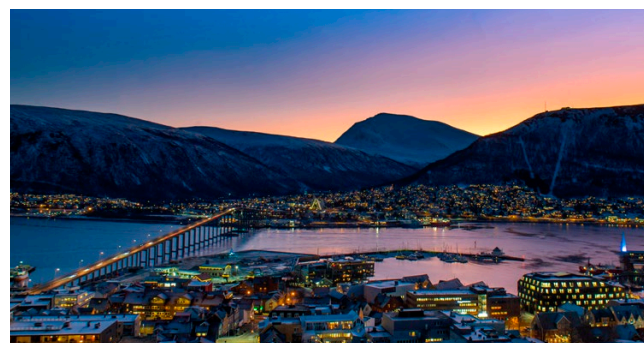


— Cruise 📍 Cruise start/finish Included flight ① Overnight stay

Head for the High Arctic

Whales, walrus, polar bears, seabirds and seals; let the creatures of the north introduce themselves as you explore the Svalbard Archipelago. This flexible itinerary allows nature to be your perfect guide for navigating a true Arctic wilderness. Rugged glaciers, spectacular fjords and frozen tundra lie in wait as you explore one of the world's northernmost inhabited areas. Walk in the footsteps of the historic polar expeditions that came before us.

| | | | |
|-------|----------------|----------|----------------------|
| Day 1 | Tromsø, Norway | Day 3-11 | Svalbard Archipelago |
| Day 2 | At sea | Day 12 | Longyearbyen > Oslo |



Voyage 501N: Jul 12 2024

Scenic Select Bonus Savings

Verandah Suite from \$21,020* per person

Spa Suite from \$31,095* per person

Prices are based on Scenic Select Bonus Savings for Jul 12 2024 departure. For current prices and offers for each suite category, visit scenic.com.au or see your travel advisor.

Strictly Limited Scenic Select Bonus Savings: Full payment 10 months prior to departure or at time of booking if less than 10 months prior to departure. Economy Airfare Credit up to the value of \$2,800pp when you book Verandah Suites or, Business Airfare Credit up to the value of \$8,000pp when you book Spa Suites or higher. Alternate Air Credit available. **Deposit per person (required within 7 days of booking):** 10% of cruise fare. All prices listed are per person, twin share and include taxes and charges, international flights are not included. Single Supplement price on application. Prices are correct as of 10 November 2023, please note a fuel surcharge may be applicable at time of full payment. **Helicopters and submersible will not operate in Svalbard.** For full terms and conditions refer to pages 60-63.

GREENLAND & THE HIGH CANADIAN ARCTIC

Savour the breathtaking grandeur of fjords with two-kilometre-high walls, carved and polished by the world's second largest icecap and adorned by luminous aquamarine icebergs. Be warmly welcomed to Inuit communities and enthralled by tales of explorers, from Nansen to Franklin, across the high Arctic. Enjoy viewing encounters with shy beluga and rare bowhead whales. Share wild-flowered tundra with reindeer, musk oxen, Arctic fox and discover new destinations in northwest Greenland and Baffin Island.



*Kaiser Franz Josef Fjord, Greenland
N 73° 27' W 25° 0'*



East Greenland

Be dazzled by the world's largest fjord system, from remote Kaiser Franz Josef Fjord to iceberg-strewn Scoresbysund. Visit paleo-Eskimo sites, trek across tundra spotting reindeer, musk oxen and Arctic hare. Delight in the flight of fulmars, puffins, king eiders and geese.



South & West Greenland

Hear tidewater glaciers thunder and calve near colourful dwarf birch and willow forests of Skoldungen Fjord. Cruise dramatic Prins Christianssund, ride Gulf Stream currents to Nuuk, and on the iceberg factory of Disko Bay.



Northwest Greenland & Baffin Island

Gaze out over a thousand islands from the lively village Upernavik. Visit Savissivik, where meteorite iron attracted Inuit craftsmen. Baffin Island's fjords are home to remnant populations of rare bowhead whales.

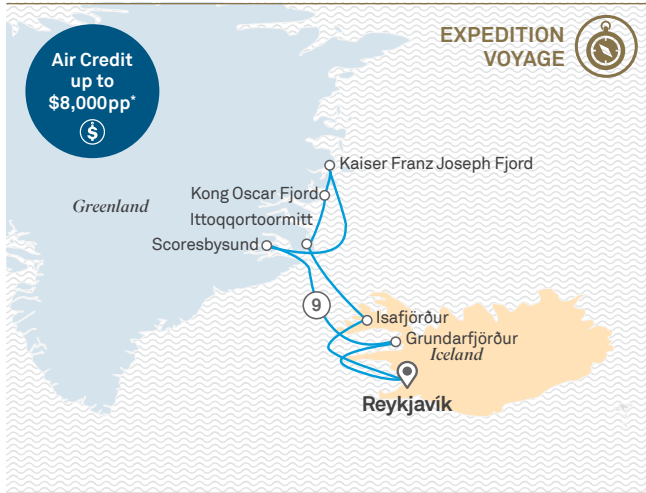


High Canadian Arctic

On glorious Lady Franklin Island, be mesmerised by some of Earth's oldest seacliffs, home to seabirds including Atlantic puffins and rare Sabine gulls. Relish walrus haulouts and polar bears on Monumental Island and thick-billed murrens on Aptapok Island.

Eastern Greenland & Iceland Expedition

🕒 10 Day Cruise 📍 Reykjavik > Reykjavik **NEW**



— Cruise 📍 Cruise start/finish ① Overnight stay

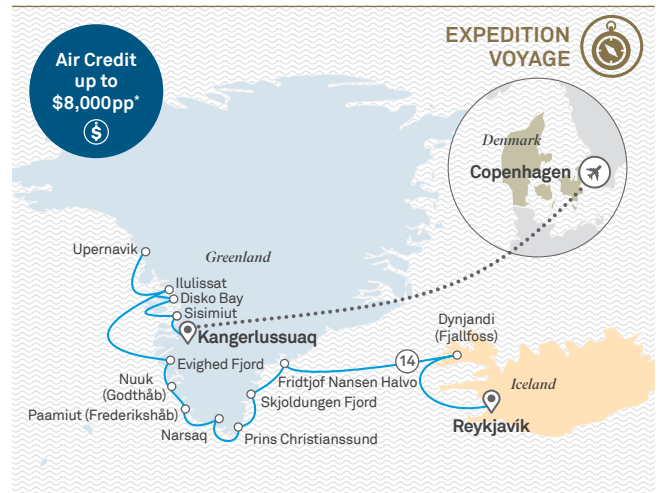
Deep Fjords, Icebergs and Cultures

Cruise among icebergs and active volcanoes and feel the spray of thundering waterfalls. Pristine and untouched, Eastern Greenland will impress with its alpine mountain tops and traditional Inuit culture. Explore the world's largest fjord system, hike around geologic wonders, kayak among icebergs in mirror-smooth bays. Pay testament to the incredible glaciers that carved the land.

| | | | |
|-------|-----------------------------|---------|---------------------------|
| Day 1 | Reykjavik, Iceland | Day 5 | Kaiser Franz Joseph Fjord |
| Day 2 | Ísafjörður | Day 6-8 | Scoresbysund |
| Day 3 | Ittoqqortoormitt, Greenland | Day 9 | Grundarfjörður, Iceland |
| Day 4 | Kong Oscar Fjord | Day 10 | Reykjavik |

Greenland Explorer

🕒 15 Day Cruise 📍 Reykjavik > Copenhagen



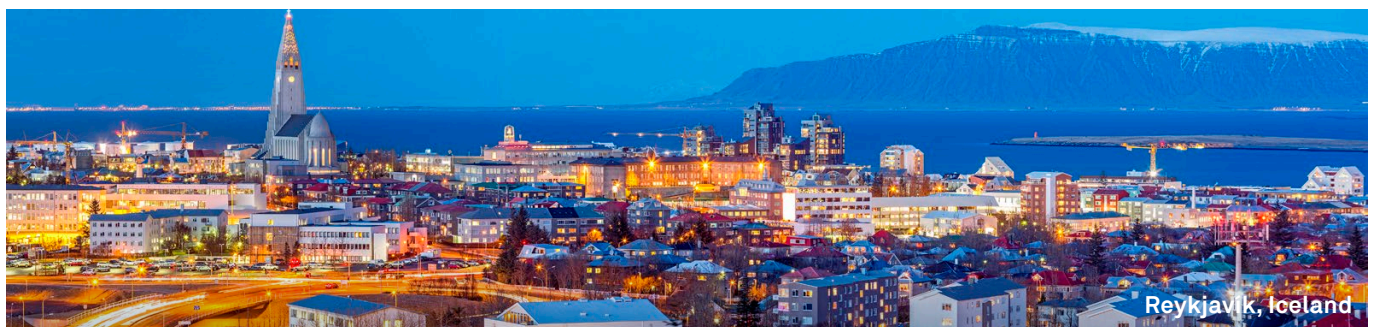
— Cruise 📍 Cruise start/finish Included flight ① Overnight stay

Explore Nature's Playground

Southern Greenland's wilderness offers some of the most spectacular and unspoilt scenery on Earth, couples with a rich culture, history and rarely seen geology. Discover natural wonder, wildlife and Viking history.

| | | | |
|-------|----------------------------------|--------|-------------------------------------|
| Day 1 | Reykjavik, Iceland | Day 9 | Nuuk (Godthåb) |
| Day 2 | Dynjandi (Fjallfoss) | Day 10 | Evighed Fjord |
| Day 3 | At sea | Day 11 | Ilulissat |
| Day 4 | Fridtjof Nansen Halvo, Greenland | Day 12 | Upernavik |
| Day 5 | Skjoldungen Fjord | Day 13 | Disko Bay |
| Day 6 | Cruising Prince Christiansund | Day 14 | Sisimiut |
| Day 7 | Narsaq | Day 15 | Kangerlussuaq > Copenhagen, Denmark |
| Day 8 | Paamiut (Frederikshåb) | | |

The itineraries on this page are a guide only and may be amended for operational reasons. As such Scenic cannot guarantee the cruises will operate unaltered from the itineraries stated above. For full terms and conditions refer to pages 60-63.



Voyage 701N: Aug 14 2024

Scenic Select Bonus Savings

Verandah Suite from \$17,440* per person

Spa Suite from \$25,425* per person

Prices are based on Scenic Select Bonus Savings for Aug 14 2024 departure. For current prices and offers for each suite category, visit scenic.com.au or see your travel advisor.

Strictly Limited Scenic Select Bonus Savings: Full payment 10 months prior to departure or at time of booking if less than 10 months prior to departure. Economy Airfare Credit up to the value of \$2,800pp when you book Verandah Suites or, Business Airfare Credit up to the value of \$8,000pp when you book Spa Suites or higher. Alternate Air Credit available. **Deposit per person (required within 7 days of booking):** 10% of cruise fare. All prices listed are per person, twin share and include taxes and charges, international flights are not included. Single Supplement price on application. Prices are correct as of 10 November 2023, please note a fuel surcharge may be applicable at time of full payment. For full terms and conditions refer to pages 60-63.

Voyage 801N: Aug 23 2024

Scenic Select Bonus Savings

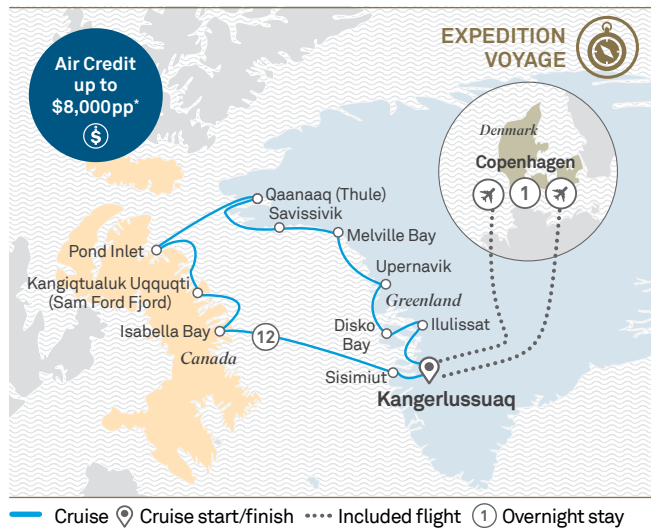
Verandah Suite from \$25,345* per person

Spa Suite from \$36,395* per person

Prices are based on Scenic Select Bonus Savings for Aug 23 2024 departure. For current prices and offers for each suite category, visit scenic.com.au or see your travel advisor.

Uncover Greenland & Canada

🕒 14 Days 📍 Copenhagen > Copenhagen **NEW**



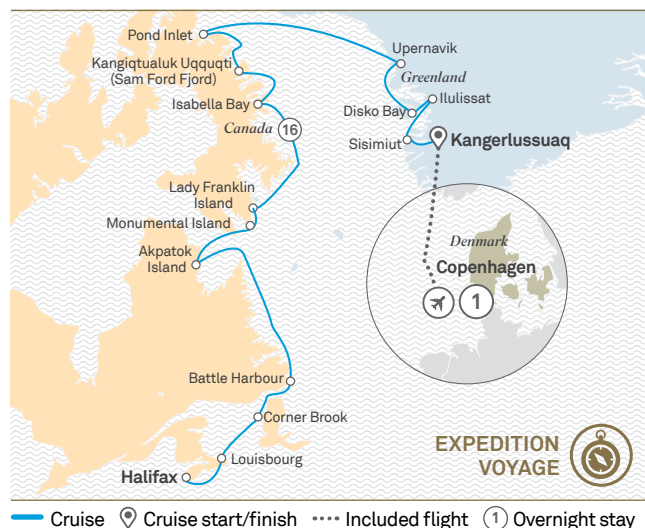
Arctic Giants

From floating giants of ice in Ilulissat to one of the northernmost towns of the world, and the soaring cliffs of Kangiqtualluk Uqquqi, the diverse beauty of Western Greenland and Baffin Island is spectacular.

| | | | |
|-------|---------------------------------------|--------|---------------------------------------|
| Day 1 | Copenhagen, Denmark | Day 8 | Qaanaaq (Thule) |
| Day 2 | Copenhagen > Kangerlussuaq, Greenland | Day 9 | Pond Inlet, Canada |
| Day 3 | At sea | Day 10 | Kangiqtualluk Uqquqi (Sam Ford Fjord) |
| Day 4 | Ilulissat > Disko Bay | Day 11 | Isabella Bay |
| Day 5 | Upernavik | Day 12 | At sea |
| Day 6 | Melville Bay | Day 13 | Sisimiut, Greenland |
| Day 7 | Savissivik | Day 14 | Kangerlussuaq > Copenhagen, Denmark |

Expedition into Greenland & the High Canadian Arctic

🕒 18 Days 📍 Copenhagen > Halifax **NEW**

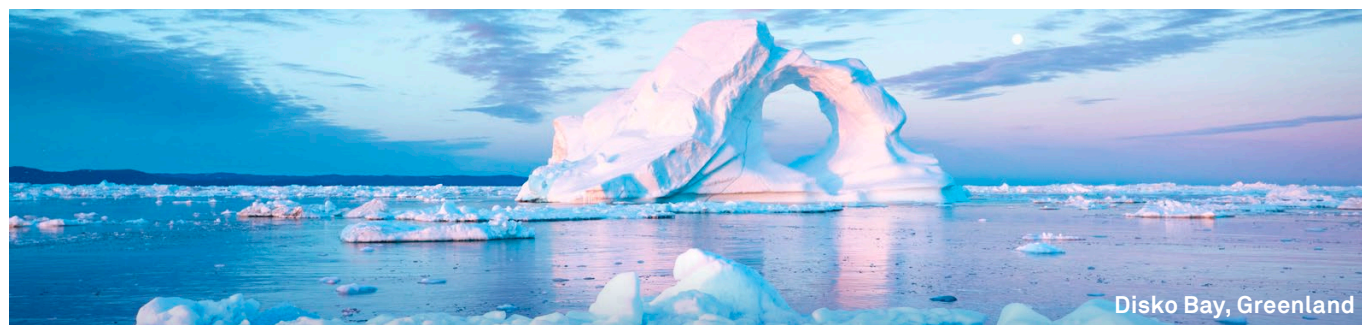


The Land that Never Melts

Learn the riveting exploration history while discovering the Canadian arctic, home to a wealth of wildlife and rugged, pristine landscapes.

| | | | |
|-------|---------------------------------------|-----------|--|
| Day 1 | Copenhagen, Denmark | Day 9 | Isabella Bay |
| Day 2 | Copenhagen > Kangerlussuaq, Greenland | Day 10 | At sea |
| Day 3 | Sisimiut | Day 11 | Lady Franklin Island > Monumental Island |
| Day 4 | Ilulissat > Disko Bay | Day 12 | Akpatok Island |
| Day 5 | Upernavik | Day 13-14 | At sea |
| Day 6 | At sea | Day 15 | Battle Harbour |
| Day 7 | Pond Inlet, Canada | Day 16 | Corner Brook |
| Day 8 | Kangiqtualluk Uqquqi (Sam Ford Fjord) | Day 17 | Louisbourg |
| | | Day 18 | Halifax |

The itineraries on this page are a guide only and may be amended for operational reasons. As such Scenic cannot guarantee the cruises will operate unaltered from the itineraries stated above. For full terms and conditions refer to pages 60-63.



Disko Bay, Greenland

Voyage 901N: Sep 05 2024

Scenic Select Bonus Savings

Verandah Suite from \$21,995* per person

Spa Suite from \$32,995* per person

Prices are based on Scenic Select Bonus Savings for Sep 05 2024 departure. For current prices and offers for each suite category, visit scenic.com.au or see your travel advisor.

Strictly Limited Scenic Select Bonus Savings (901N): Full payment 10 months prior to departure or at time of booking if less than 10 months prior to departure. Economy Airfare Credit up to the value of \$2,800pp when you book Verandah Suites or, Business Airfare Credit up to the value of \$8,000pp when you book Spa Suites or higher. Alternate Air Credit available. **Strictly Limited Scenic Select Savings (201Y):** Full payment 10 months prior to departure or at time of booking if less than 10 months prior to departure. **Deposit per person (required within 7 days of booking):** 10% of cruise fare. All prices listed are per person, twin share and include taxes and charges, international flights are not included. Single Supplement price on application. Prices are correct as of 10 November 2023, please note a fuel surcharge may be applicable at time of full payment. For full terms and conditions refer to pages 60-63.

Voyage 201Y: Sep 17 2024

Scenic Select Savings

Verandah Suite from \$20,120* per person

Spa Suite from \$31,320* per person

Prices are based on Scenic Select Savings for Sep 17 2024 departure. For current prices and offers for each suite category, visit scenic.com.au or see your travel advisor.



Scenic Eclipse Discovery Voyages



Guided walks

The Discovery Experience

A Scenic Discovery Voyage is the perfect blend of Scenic Expedition and Cruise voyages. As The World's First Discovery Yachts, Scenic Eclipse can reach smaller ports and remote destinations such as hard-to-reach islands in the Caribbean. With only up to 228 guests on board and a Discovery Team of up to 15 specialists, a Discovery Voyage provides immersion in your destination matched with relaxed ultra-luxury. Guests can tailor their days with a wide range of truly all-inclusive Scenic Freechoice activities and to cater to a variety of interests and fitness levels and experience bespoke and unforgettable Scenic Enrich excursions.



Turks and Caicos Islands

The Benchmark in Ultra-Luxury Discovery Voyages

Scenic Eclipse yachts have been purpose-built for these ecologically spectacular destinations. The ship features GPS Dynamic Positioning maintaining its location without dropping anchor onto sensitive sea beds. As small-ship Discovery Yachts, we have the ability to access hard to reach small ports and villages that other larger ships can't. Scenic Eclipse provides a multitude of luxurious spaces on board where you can enjoy the balmy weather, unwind and retreat in the Sky Bar for some relaxation as we cruise along breathtaking coastlines. Recline in the cabanas and lounge chairs as you sip on a cocktail.

EXPLORE ICELAND & SCOTLAND

Discover North Atlantic's most enchanting archipelagos in truly all-inclusive luxury. Iceland, settled by Vikings, promises sparkling glaciers, powerful waterfalls and a landscape laid down by falling ash and molten lava, punctuated by enticing thermal pools. To the south, across warm Gulf Stream, waters teeming with seabirds and whales, Scotland offers secret waterways, glorious mountains, mysterious standing stones, remnant Stone Age villages, and a lively culture of kilts, bagpipes and a wee dram of whisky.



*Fort William, Scotland
N56° 59' W 06° 06'*



Reykjavík

Savour traditional food and modern street fare on a Scenic Enrich culinary exploration, or a walking tour of city highlights including Hallgrímskirkja Church, colourful houses of Þingholt, Old Harbor and Harpa Concert Hall. Be enchanted by volcanic landscape as you relax in the rejuvenating Blue Lagoon.



Siglufjörður

Be enthralled sailing up the dramatic fjord to Siglufjörður. Explore the Herring Era Museum, one of Iceland's most fascinating exhibitions, turf-houses of the Laufas Museum and Akureyri, Waterfall of the Gods.



Fort William

Sail up enchanting Loch Linnhe to the heart of the Scottish Highlands. Disembark in the shadow of Ben Nevis, at 1,345 m, the highest peak in the United Kingdom, and explore the refreshing hiking trails of Glen Nevis valley and stop by Ben Nevis Distillery for a tasting.



St Kilda

Exalt in a rare visit to these remote, windswept islands and soaring sea stacks. Inhabited for nearly 4,000 years until 1930, a tough band of islanders exploited colonies of gannets, fulmar and puffins for food, feathers and oil. Today nearly a million seabirds nest on the World Heritage-listed site.



Puffins, Iceland

Iceland in Depth

🕒 10 Day Cruise 📍 Reykjavík > Reykjavík

Air Credit up to \$8,000pp*

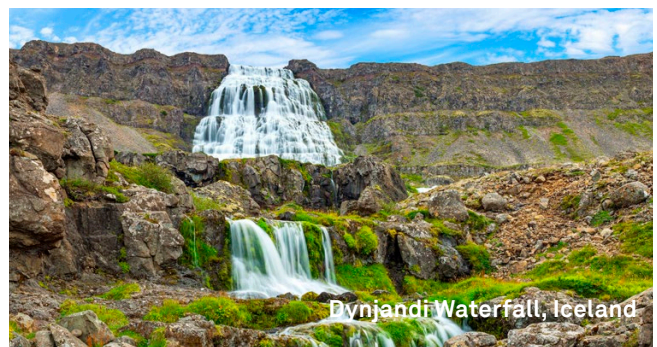
DISCOVERY VOYAGE

— Cruise 📍 Cruise start/finish ① Overnight stay

Exploring the Land of Fire and Ice

There are few places in the world more fascinating than Iceland. Quirky and compelling, this unique island is known for its stunning volcanic beauty and mythical tales. Explore glaciers and volcanoes, be immersed in the distinctive Icelandic culture and delight in the sheer abundance of other-worldly sights. Iceland's magical wonder will have you spellbound in no time.

| | | | |
|-------|---------------------------------------|--------|----------------|
| Day 1 | Reykjavík, Iceland | Day 6 | Húsavík |
| Day 2 | Dynjandi (Fjallfoss) > Patreksfjörður | Day 7 | Grimsey Island |
| Day 3 | Ísafjörður | Day 8 | Seyðisfjörður |
| Day 4 | Sauðárkrúkur | Day 9 | Heimaey |
| Day 5 | Siglufjörður | Day 10 | Reykjavík |



Dynjandi Waterfall, Iceland

Voyage 601N: Aug 05 2024

Scenic Select Bonus Savings

Verandah Suite from \$17,035* per person

Spa Suite SOLD OUT

Prices are based on Scenic Select Bonus Savings for Aug 05 2024 departure. For current prices and offers for each suite category, visit scenic.com.au or see your travel advisor.

Strictly Limited Scenic Select Bonus Savings: Full payment 10 months prior to departure or at time of booking if less than 10 months prior to departure. Economy Airfare Credit up to the value of \$2,800pp when you book Verandah Suites or, Business Airfare Credit up to the value of \$8,000pp when you book Spa Suites or higher. Alternate Air Credit available. **Deposit per person (required within 7 days of booking):** 10% of cruise fare. All prices listed are per person, twin share and include taxes and charges, international flights are not included. Single Supplement price on application. Prices are correct as of 10 November 2023, please note a fuel surcharge may be applicable at time of full payment. For full terms and conditions refer to pages 60-63.

° Scottish Isles: Historic Trails & Wilderness

🕒 9 Day Cruise 📍 Dublin > Leith (Edinburgh) **NEW**



Wild Landscapes

Wild and extraordinarily beautiful, the coastline of Scotland is a sight to behold. Fiercely proud of its history and culture, astounding and dramatic natural beauty, Scotland and the many islands that dot her coastline offer up a wealth of incredible experiences. From wildlife to Celtic and Viking sites, the Scottish Isles are a revelation.

| | | | |
|-------|--|-------|-------------------|
| Day 1 | Dublin, Ireland | Day 5 | Portree |
| Day 2 | Portrush, Northern Ireland | Day 6 | St Kilda Island |
| Day 3 | Oban, Scotland | Day 7 | Stromness |
| Day 4 | Fort William > Cruising Sound of Mull | Day 8 | Aberdeen |
| | | Day 9 | Leith (Edinburgh) |

The itineraries on this spread are a guide only and may be amended for operational reasons. As such Scenic cannot guarantee the cruises will operate unaltered from the itineraries stated above. For full terms and conditions refer to pages 60-63.



Voyage 101B: Jun 07 2024

Scenic Select Savings

Verandah Suite from \$11,995* per person

Spa Suite SOLD OUT

Prices are based on Scenic Select Savings for Jun 07 2024 departure. For current prices and offers for each suite category, visit scenic.com.au or see your travel advisor.

Strictly Limited Scenic Select Savings: Full payment 10 months prior to departure or at time of booking if less than 10 months prior to departure. **Deposit per person (required within 7 days of booking):** 10% of cruise fare. Single Supplement price on application. All prices listed are per person, twin share and include taxes and charges, international flights are not included. Prices are correct as of 10 November 2023, please note a fuel surcharge may be applicable at time of full payment. For full terms and conditions refer to pages 60-63.



Portree, Isle of Skye

THE CARIBBEAN

Stretches of white sand, swaying palm trees, crystal-clear water; the mesmerising sounds of island music... the Caribbean is a dreamy destination for sun, sand and sea lovers.

The Caribbean comprises of 30 island nations and hundreds more isles and vibrant cays, as well as lush rainforest, thick jungle, sparkling cities, diverse cultures and exotic cuisines. Admire the historic and colourful architecture in the Bahamas; explore the long British history of Barbados; take a trek through jungle or climb an active volcano on St Vincent & The Grenadines; and sample the Spanish, Creole and African flavours of Jamaica.



Bermuda & The Bahamas

11 Day Cruise | New York > Nassau **NEW**



— Cruise | 📍 Cruise start/finish | ① Overnight stay

Caribbean Playground

Discover the wonders of this spectacular region, sailing from one beautiful island to another. The Caribbean is a delicious mix of astonishing beauty, diverse cultures, flavours, vibrant music, and people. From the British colonial history of Hamilton in Bermuda to the raw beauty and relaxed atmosphere of the Cayman Islands and the Bahamas, spending time here will fill your soul.

| | | | |
|---------|-------------------------|---------|---------------------------|
| Day 1 | New York, USA | Day 7-8 | At sea |
| Day 2-3 | At sea | Day 9 | Darby Island, The Bahamas |
| Day 4 | Hamilton, Bermuda | Day 10 | Egg Island |
| Day 5 | Hamilton > St. George's | Day 11 | Nassau |
| Day 6 | St. George's | | |

The itineraries on this page are a guide only and may be amended for operational reasons. As such Scenic cannot guarantee the cruises will operate unaltered from the itineraries stated above. For full terms and conditions refer to pages 60-63.



Voyage 401J: Oct 12 2024

Scenic Select Savings

Verandah Suite from \$12,445* per person

Spa Suite from \$18,745* per person

Prices are based on Scenic Select Savings for Oct 12 2024 departure. For current prices and offers for each suite category, visit scenic.com.au or see your travel advisor.

Strictly Limited Scenic Select Savings: Full payment 10 months prior to departure or at time of booking if less than 10 months prior to departure. **Deposit per person (required within 7 days of booking):** 20% of cruise fare. Single Supplement price on application. All prices listed are per person twin share and include taxes, and charges, international flights are not included. Prices are correct as of 10 November 2023, please note a fuel surcharge may be applicable at time of full payment. For full terms and conditions refer to pages 60-63.

Island Odyssey: Bahamas to the Grenadines

13 Day Cruise | Nassau > Bridgetown **NEW**

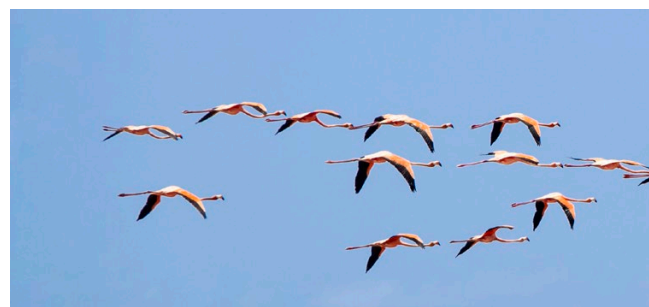


— Cruise | 📍 Cruise start/finish | ① Overnight stay

Paradise Found

Vibrant, unexpected and spectacular, the Caribbean will delight. Immerse yourself in the breathtaking beauty of Saint Barts and revel in the eco-paradise of pristine, turquoise waters of the southern Grenadines.

| | | | |
|-------|--------------------------------------|--------|---|
| Day 1 | Nassau, The Bahamas | Day 9 | English Harbour, Antigua and Barbuda |
| Day 2 | Long Island | Day 10 | Îles des Saintes, Guadeloupe |
| Day 3 | Little Inagua Island | Day 11 | Tobago Cays, Saint Vincent and the Grenadines |
| Day 4 | At sea | Day 12 | Mayreau |
| Day 5 | San Juan, Puerto Rico | Day 13 | Bridgetown, Barbados |
| Day 6 | Isla de Culebra | | |
| Day 7 | Virgin Gorda, British Virgin Islands | | |
| Day 8 | Gustavia, Saint Barthélemy | | |



Voyage 101J: Oct 24 2024

Scenic Select Savings

Verandah Suite from \$13,455* per person

Spa Suite from \$19,395* per person

Prices are based on Scenic Select Savings for Oct 24 2024 departure. For current prices and offers for each suite category, visit scenic.com.au or see your travel advisor.



Scenic Eclipse Cruise Voyages



From exploring the picturesque Iberian Peninsula to the pristine warm waters of the Italian coastline with exclusive access to charming ports, our handcrafted experiences and expert Discovery Team will take you to the heart of your extraordinary destinations.

Unrivalled Exploration

Take your explorations further by adding one of our next-level excursions taking you above, below and beyond the horizon. Add excursions on our two, state-of-the-art, Airbus H130-T2 helicopters[^], specially designed for flightseeing and delivering a perspective few have experienced. Think helicopter hiking, helicopter golf or gastronomic helicopter dining experiences. Or board our customised submersible[^], to reveal underwater wonders seldom seen.

Scenic Freechoice

Each day set off on unique excursions driven by your interests. Exclusively handcrafted for Scenic Eclipse guests, these extraordinary experiences may include an immersive cooking class, an interactive workshop with a chocolatier or wine maker, or authentic experiences that allow guests to delve deeper into a particular destination and culture. Customise your days with an extensive range of expert-led Scenic Freechoice excursions.

Scenic Enrich

Adding even more depth to your cruise voyage, the included and exclusive Scenic Enrich experiences will take you into the cultural heart of the places you visit. Completely handpicked, enjoy a range of diverse and enriching moments that take you behind the scenes, to relish private access to museums to spellbinding exclusive performances and locations destined to become a highlight of your voyage.



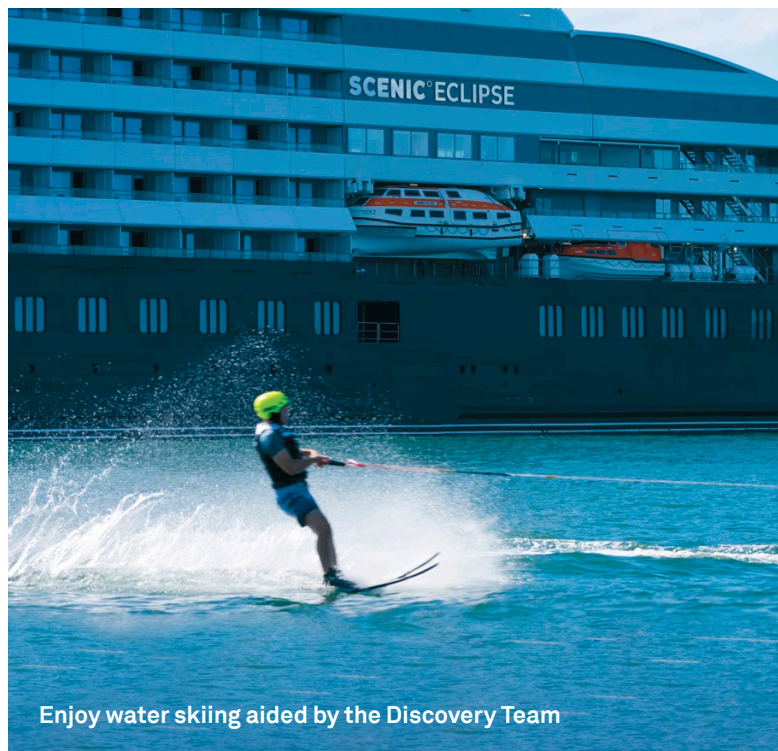
Find a secluded spot to enjoy some snorkelling



Explore further by E-bike



Chef's Garden @ Epicure masterclasses



Enjoy water skiing aided by the Discovery Team

Unique Ports of Call

Scenic Eclipse provides access to hidden wonders, with unrivalled access to the heart of small ports and unique destinations, throughout your Cruise Voyage.

At just 168-metres in length, Scenic Eclipse has access to ports that large ships can't. From being immersed in the sophistication, elegance and super yacht culture of Puerto Banús, to exploring the castles in Saint-Malo, you will benefit from the size and design of Scenic Eclipse.

Warm Water Activities

In these balmy destinations, make the most of all the water sports equipment and activities available. Venture out with the Discovery Team on water skis, stand-up paddleboards, kayaks or Tiwal Sailing boat and swim in the waters on a guided snorkelling experience. Enjoy remote beach landings on secluded islands that are the secret of locals alone. Return on board to our 550m² Senses Spa for pure indulgence, relax in a cabana with a cocktail or enjoy a dip in the pool on Deck 10.

EUROPE & THE MEDITERRANEAN

The azure waters of Europe's Mediterranean Sea are home to many unique and picturesque towns, best explored on Discovery Yachts. From the scenic European Rivas to the warm waters of the Italian Coast, Scenic Eclipse's world-class design provides guests with exclusive access to charming ports and villages.

Discover the colourful mosaic tiles, architecture, fresh seafood and wines of the Iberian Coastline, in destinations such as Lisbon, Seville and Barcelona. Along the stunning Italian coastline experience the regional flavours in such place as the fishing village of Portofino or Sicily and discover the ancient ruins of Rome. Venture to the historic United Kingdom to discover the people and cultures of Wales, Ireland and England.





Porto Venere, Italy



Iberian Peninsula

Explore the great sea faring nations of Spain and Portugal. Like explorers of old, set sail from Portugal's capital Lisbon, following the Atlantic coast past the Strait of Gibraltar and into the Mediterranean.



Italian Coastline

Explore the coast of Italy as you cruise past cliffs plunging into the deep blue of the Mediterranean, stopping in volcanic archipelagos and ancient cities, with sapphire coloured waters, mountain ranges, elegant towns and historic sites.



France

France is as diverse as it is beautiful. Explore the French Riviera and discover stunning beaches and coastlines, admire beautiful towns inspired by poets and artists and the azure waters that will take your breath away.



United Kingdom

On select Western European itineraries start your voyage in the U.K., discover Wales, Ireland and England. Explore an intriguing mix of landscapes, cultures, history, architectures and cuisine and the tales of centuries past.

Incredible Iberian Discovery

🕒 11 Day Cruise 📍 Lisbon > Barcelona



— Cruise 📍 Cruise start/finish ① Overnight stay

Iberian Jewels

Explore the great seafaring nations of Spain and Portugal. Like the explorers of old, set sail from Portugal’s capital Lisbon and follow the Atlantic coast past the Strait of Gibraltar and into the Mediterranean. Along the way, be charmed by quaint little fishing villages, ancient Roman ruins boasting spectacular artworks and idyllic glistening beaches that are perfect for soaking up the sun.

| | | | |
|---------|------------------|--------|-----------------------|
| Day 1 | Lisbon, Portugal | Day 8 | Formentera |
| Day 2 | Portimão | Day 9 | Sóller de Mallorca |
| Day 3-4 | Seville, Spain | Day 10 | Ciutadella de Menorca |
| Day 5 | Puerto Banús | Day 11 | Barcelona |
| Day 6 | Málaga | | |
| Day 7 | Cartagena | | |

The itineraries on this page are a guide only and may be amended for operational reasons. As such Scenic cannot guarantee the cruises will operate unaltered from the itineraries stated above. For full terms and conditions refer to pages 60-63.



Voyage 301M: Apr 22 2024

Scenic Select Savings

Verandah Suite from \$9,365* per person

Spa Suite from \$16,515* per person

Prices are based on Scenic Select Savings for Apr 22 2024 departure. For current prices and offers for each suite category, visit scenic.com.au or see your travel advisor.

Strictly Limited Scenic Select Savings: Full payment 10 months prior to departure or at time of booking if less than 10 months prior to departure. **Deposit per person (required within 7 days of booking):** 10% of cruise fare. All prices listed are per person, twin share and include taxes and charges, international flights are not included. Single Supplement price on application. Prices are correct as of 10 November 2023, please note a fuel surcharge may be applicable at time of full payment. For full terms and conditions refer to pages 60-63.

Italian Treasures

🕒 9 Day Cruise 📍 Civitavecchia > Valletta **NEW**

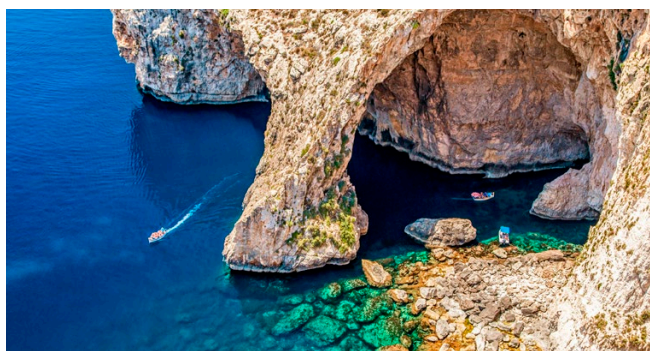


— Cruise 📍 Cruise start/finish ① Overnight stay

Iconic Italian Coastlines

Discover the must-see coastal sites of Italy, and be immersed in natural splendour, architecture, wonderful food, UNESCO World Heritage sites and Roman history. Be enchanted by sheer cliffs dotted with picture-perfect beaches, pastel coloured fishing villages, terraced vineyards and olive and lemon groves. This is Italy at its most spectacular.

| | | | |
|-------|-----------------------------|-------|---------------------------|
| Day 1 | Civitavecchia (Rome), Italy | Day 6 | Giardini Naxos (Taormina) |
| Day 2 | Ponza | Day 7 | Licata |
| Day 3 | Capri | Day 8 | Mgarr (Gozo) |
| Day 4 | Amalfi | Day 9 | Valletta |
| Day 5 | Lipari | | |



Voyage 701M: May 10 2024

Scenic Select Savings

Verandah Suite from \$12,095* per person

Spa Suite SOLD OUT

Prices are based on Scenic Select Savings for May 10 2024 departure. For current prices and offers for each suite category, visit scenic.com.au or see your travel advisor.

Heritage & Traditions of Western Europe

🕒 11 Day Cruise 📍 Lisbon > Dublin



Seafarers and Explorers

Relish in the baroque grandeur of Portugal and Spain and be immersed in quaint seaside hamlets in France. Delight in the Scilly Islands off the Cornish coast and uncover some of Wales' most picturesque sites in Fishguard, windswept and utterly beautiful, before arriving in Ireland. Warm, welcoming and full of fun.

| | | | |
|-------|---------------------------|--------|----------------------------|
| Day 1 | Lisbon, Portugal | Day 7 | Fowey, England |
| Day 2 | Leixões | Day 8 | St Mary's, Isles of Scilly |
| Day 3 | Vigo, Spain > Cíes Island | Day 9 | Fishguard, Wales |
| Day 4 | At sea | Day 10 | Douglas, Isle of Man |
| Day 5 | Belle Île, France | Day 11 | Dublin |
| Day 6 | Douarnenez | | |



Voyage 301E: May 28 2024

Scenic Select Bonus Savings

Verandah Suite from \$13,525* per person

Spa Suite from \$24,175* per person

Prices are based on Scenic Select Bonus Savings for May 28 2024 departure. For current prices and offers for each suite category, visit scenic.com.au or see your travel advisor.

Strictly Limited Scenic Select Bonus Savings Full payment 10 months prior to departure or at time of booking if less than 10 months prior to departure. Economy Airfare Credit up to the value of \$2,800pp when you book Verandah Suites or, Business Airfare Credit up to the value of \$8,000pp when you book Spa Suites or higher. Alternate Air Credit available. **Deposit per person (required within 7 days of booking):** 10% of cruise fare. All prices listed are per person, twin share and include taxes and charges, international flights are not included. Single Supplement price on application. Prices are correct as of 10 November 2023, please note a fuel surcharge may be applicable at time of full payment. For full terms and conditions refer to pages 60-63.



Fowey, United Kingdom

Terms & Conditions

1. Contract

1.1 These terms and conditions ("Conditions") form the basis of the contract between You and Scenic Tours Pty Limited ("Scenic", "We", "Us" or "Our") ("Contract"). It is important that You read the Contract carefully to ensure that You understand Your rights and obligations. Your Contract may also include additional terms and conditions applicable to a special offer or promotion, and/or, depending on your Journey, Destination Specific Terms.

1.2 You confirm Your understanding and acceptance of the Conditions and the Contract by paying Your Booking Deposit or otherwise paying any part of the price of Your Journey. If you do not understand and accept the Conditions and the terms of the Contract, you should not make any payment to Us and in this case, we will cancel Your Booking in accordance with clause 3.3 of these conditions.

1.3 If You make a Booking on behalf of any other person, You represent to Us that You have their authority to make the Booking on their behalf and to legally bind them to the terms of the Contract, including the Conditions. Each reference to "You", "Your", "Guest" or "Passenger" means the person who makes the Booking and each other person covered by the Booking.

1.4 Your Itinerary does not form part of the Contract.

1.5 We may amend these Conditions from time to time. If We amend the Conditions, We will publish the amended version on Our Website. We will also provide the current version of the Conditions to You upon request. You will be bound by the current version of the Conditions at the time You make Your Booking.

1.6 If Your Journey includes a Cruise, Your transportation on any river cruise or ocean cruise vessel during Your Journey, will also be subject to the terms and conditions of the Operator of the vessel ("Operator Conditions"). Although the Operator may be related to Us, it is a separate legal entity and business and You will enter a separate contract (based on the Operator Conditions) with each Operator. The Operator Conditions are published on Our Website and are also available on request by contacting one of our team at the Customer Service Contact Address. It is important that You read the Operator Conditions carefully to ensure that You understand Your rights and obligations under them. You confirm Your understanding and acceptance of the Operator Conditions by paying Your Booking Deposit or otherwise paying any part of the price of Your Journey to Us. The Cruise Conditions will be provided with Your cruising ticket, which will be provided to You before Your Cruise. Where the Cruise is on board Scenic Eclipse, the Scenic Cruise Passenger Ticket Terms and Conditions are hereby incorporated into and form part of these Terms & Conditions as if fully set out herein.

1.7 For other elected activities, the terms and conditions of the operator or service provider will apply. A copy of these separate terms and conditions can be requested by contacting our customer service team at the Customer Service Contact Address and may also be available to view on Our Website. Such terms and conditions (including but not limited to Helicopter Passenger Ticket Terms & Conditions) and a General Waiver are incorporated into and form part of these Conditions.

1.8 All travel involves risks. We strongly recommend You take out comprehensive travel insurance with a reputable insurance company to cover You against risks associated with Your Journey including cover for loss of luggage, medical expenses and costs and expenses incurred due to cancellations, delays or other disruptions.

2. Meaning of Words

In these Conditions, the following words and expressions have the following meanings:

(a) "Booking" means the booking You have made with Us for the Journey.

(b) "Booking Deposit" means a booking deposit in an amount which We have notified You before You make Your Booking;

(c) "Captain" means the captain of a Cruise Vessel

(d) "Cruise" means a cruise constituting or forming part of Your Journey;

(e) "Cruise Director" means any person designated by Us as the cruise director for any Cruise.

(f) "Cruise Vessel" means a vessel used for the purpose of providing a Cruise and includes the Scenic Eclipse fleet.

(g) "Customer Service Contact Address" means the details for contacting Us set out in clause 13.1 of the Conditions.

(h) "Deposit Protection Plan" means Our deposit protection plan as set out on Our Website and referred to in clause 12.6.

(i) "Destination Specific Terms" means terms and conditions specific to a particular Journey, as published in the Journey Brochure or on Our Website for the relevant Journey, or, where applicable, set out in clause 15 of these Conditions.

(j) "Discovery Team Leader" means any person designated by Us as the Discovery Team Leader for any Cruise forming part of Your Itinerary

(k) "Drone" means an unmanned aerial vehicle or UAV, being an aircraft of any size that operates without a pilot on board.

(l) "Force Majeure Event" means any act of God, war, terrorism, fire, flood or any other extreme weather conditions or act of nature, loss of power, epidemics or pandemics, industrial disputes, slow-downs or other strike activities, political unrest, riots or civil disturbances, prohibitions or acts of Federal, State, Territory, or Local government or, quasi-governments bodies or other authorities (including, in each case, their

duly constituted or appointed agents), inability to obtain any necessary licence or consent and delays caused by sub-contractors, suppliers or other third parties (including telecommunications carriers), material shortages, any border closure by any country or any Australian States or Territory, or other disruption to the Journey beyond Our control.

(m) "Future Travel Credit" means a credit Issued by Us to You if We cancel Your Booking as a result of the occurrence of a Force Majeure Event under clause 5.4 of these Conditions which may be redeemed against a future booking in accordance with clause 5.4(c).

(n) "General Waiver" means the general waiver available at Our Website.

(o) "Guest Contact Details" means Your contact details which You have provided to Us at the time of making Your Booking, as amended by any written notice You may provide to Us from time to time in accordance with clause 14.1 of these Conditions.

(p) "Helicopter Passenger Terms and Conditions" means the helicopter passenger terms and conditions available on Our Website.

(q) "Itinerary" means the Itinerary for Your Journey issued by Us, subject to any amendments made by Us from time to time in accordance with the Contract.

(r) "Operator" means the owner or operator of a river cruise vessel, who is a separate legal entity and business, whether or not related to Us.

(s) "Operator Conditions" means the Operator's conditions of carriage for a Cruise vessel, which are available on our Website and otherwise on request to Us.

(t) "Personal Information" means information about You and any other person for whom You make a Booking, including Your name, address, phone number and other contact details, details of Your next of kin, Your passport number, credit or debit card details, and information about Your health, medical needs, dietary requirements and any disabilities or other special requirements.

(u) "Service Provider" means any independent contractor engaged by Us to provide a Journey or any part of a Journey, and includes an Operator.

(v) "Journey" means a Journey or journey package offered or provided by Us.

(w) "Journey Brochure" means the brochure for Your Journey published by Us in hard copy or electronically and includes any amendments notified on Our Website from time to time.

(x) "Journey Departure Date" means the scheduled departure date for the Journey set out in Your Itinerary.

(y) "Tour Director" means any person designated by Us as the Tour Director for Your Journey.

(z) "Journey Price" means the total amount payable by You for the Journey. It includes the Booking Deposit.

(aa) "Validity Period" means in respect of a Journey Brochure, the validity period stated in that brochure.

(bb) "Website" means Scenic's website at www.scenic.com.au.

(cc) "Your Journey" means the Journey You have booked with Us, as outlined in Your Itinerary

3. Booking and Payment

3.1 You may make a Booking directly with Us or through a travel agent. Your Booking will be confirmed only when We have received:

(a) Your Booking Deposit; or

(b) if Your Booking is made 120 days or less before the Journey Departure Date, the Journey Price and all other amounts payable under the Contract.

3.2 Except as indicated in clause 3.8, We will notify You of the Journey Price and provide You with Your Itinerary at the time of making Your Booking.

3.3 You must pay Your Booking Deposit within 7 days after making Your Booking. If We do not receive Your Booking Deposit within 7 days after You make Your Booking, We will automatically cancel Your Booking without further notice to You.

3.4 If You have made Your Booking through a travel agent, Your travel agent should forward Your Booking Deposit or Journey Price to Us on Your behalf. However, payments by You to Your travel agent are not considered to be payments by You to Us. We will consider payment has been received by Us only when We receive payment from Your travel agent.

3.5 Any accommodation, sightseeing or flights We book for You separately to those stated in Your Itinerary are not included in the Booking Deposit or Journey Price and You must pay both the deposit and full costs for such additional services separately to the Booking Deposit and Journey Price at the time which We notify You at or before You make Your Booking. Any requests for such additional services will not be processed until Your Booking Deposit is paid in full.

3.6 For some special offers, We may require payment of a further deposit before the balance of the Journey Price is due. We will notify You of any such requirement before You complete Your Booking and will confirm the payment details when we confirm Your Booking. You must make payment by the date notified by Us.

3.7 Except as required by law or in accordance with the Deposit Protection Plan or as otherwise provided in the Contract, Booking Deposits are not refundable and are not transferable to other Journeys or Bookings.

3.8 If You make Your Booking within 120 days of Your Journey Departure Date, You must pay Your Booking Deposit before We can process Your Booking and confirm Your Journey Price. Your Booking is not confirmed until You have paid the Journey Price. We will notify You of the

Journey Price promptly after We have calculated it. If You do not confirm Your acceptance of the Journey Price in writing within 7 days of receipt of notification from Us, You will be deemed to have rejected the Journey Price. If You notify Us that You have rejected the Journey Price or if You are deemed to have rejected the Journey Price, We will cancel Your Booking and refund Your Booking Deposit. If You accept the Journey Price, You must pay the outstanding Journey Price within 24 hours of Us notifying You of the Journey Price, or We will cancel Your Booking and retain Your Booking Deposit.

3.9 If clause 3.8 does not apply, You must pay to Us the balance of the Journey Price and all other amounts payable under the Contract no later than 100 days before the Journey Departure Date. If Your Journey includes a Cruise You must pay the balance of the Journey Price to Us no later than 120 days before the Journey Departure Date.

3.10 If You wish to change any incidental component of Your Booking, such as any pre or post-Journey accommodation or add-ons, You must contact Us. We may accept or reject Your request at Our absolute discretion and if We accept, You must pay a change fee to Us for each change in accordance with clause 4.7(b) of these Conditions and any additional costs resulting from the change. Additional costs may include additional overnight accommodation required as a result of any change to Your flights.

3.11 You may cancel a Booking by sending Us written notice of cancellation at the Customer Service Contact Address. If You cancel a Booking You will be liable to pay a cancellation fee in accordance with clause 4.8 of these Conditions.

3.12 A name change for a Guest or a change to the Journey Departure Date is considered a cancellation of the original Booking.

4. Prices, inclusions and fees

4.1 All Journey Prices are quoted in Australian Dollars.

4.2 If You pay Us by credit card a surcharge may be added, please enquire for details. There is no surcharge for payments made by cash, cheque or direct transfer to Our nominated bank account.

4.3 Your Journey Price includes all coach, rail and cruise travel set out in the Itinerary; the services of a Cruise Director, Discovery Leader (if applicable) and/or Tour Director; airport transfers outside Australia; meals as specified in Your Itinerary; economy class group flights and air taxes as set out in your Itinerary; accommodation; sightseeing and admissions; and where stated in Your Itinerary; port charges; all gratuities and tipping; and any other specific inclusions identified in Your Itinerary.

4.4 Unless expressly listed in Your Itinerary as an inclusion, Your Journey Price does not include airfares and associated fees, charges and taxes; additional optional activities; accommodation upgrades; meals not specified in Your Itinerary; drinks; laundry; passport fees; visas; vaccinations; medical assistance; medical services on board Scenic Eclipse; Spa and beauty treatments in the Spa Sanctuary; government taxes and charges (excluding GST); or any items or expenses of a personal nature. All helicopter, submersible and scuba diving experiences are an additional cost.

4.5 Unless stated as an inclusion in Your itinerary, overnight accommodation required to meet Your Journey and/or any flight connections are not included in the Journey Price and will be at Your expense.

4.6 We reserve the right not to honour any published prices that We determine were erroneous due to printing, electronic, or clerical error. If You make a Booking based on erroneous pricing, We will offer You the option of cancelling the Booking and receiving a refund of any amount paid by You or confirming the Booking by paying the difference between the erroneous price and the correct price, as determined by Us.

4.7 The following Fees are payable in addition to the Journey Price:

(a) If You book 21 days or less before the Journey Departure Date, You must pay a late booking fee of \$50.00 per Booking.

(b) If You change Your Booking, other than by varying the Journey Departure Date, You must pay a change fee of \$50.00 per Booking. This fee is on account of administrative expenses incurred by Us in changing Your Journey and is a genuine and reasonable estimate of Our expenses.

4.8 If You cancel Your Journey for any reason prior to Your Journey Departure Date (including by changing Your Journey Departure Date or the name of a Guest), You will be liable for the following cancellation fee:

| Days of notice prior to Journey: | Cancellation charge (per journey commencement) |
|----------------------------------|--|
| 120 days and over | Loss of deposit |
| 119 to 91 days | 50% of Journey Price |
| 90 days and less | 100% of Journey Price |

You may also be liable to pay cancellation fees to air carriers and other third parties.

4.9 If using a Future Travel Credit and You cancel Your Journey for any reason prior to 91 days of Your Journey Departure Date (including by changing Your Journey Departure Date or the name of a Guest), You will be liable to a cancellation charge of 100% of the Journey Price held as a Future Travel Credit, regardless of when you notify us. If the Future Travel Credit is not utilised within 24 months of the date of cancellation, the full amount will be forfeited. You may also be liable to pay cancellation fees to airlines and other third parties.

4.10 If using a Future Travel credit and You cancel Your

Journey for any reason within 90 days of Your Journey Departure Date (including by changing Your Journey Departure Date or the name of a Guest), You will be liable to a cancellation charge of 100% of the Journey Price, regardless of when you notify us. You may also be liable to pay cancellation fees to airlines and other third parties.

4.11 We may vary Your Journey Price at any time before Your Departure Date to the extent necessary to meet any increase in the Journey costs for reasons outside Our control, including airfares, fuel, government taxes and charges, exchange rate fluctuations or other Journey related costs or tariffs. We will notify You of any such variation using the Guest Contact Details.

4.12 You are responsible for and must pay for all costs and expenses incurred by You as a result of any change made by You to Your Itinerary after Your Journey Departure Date. This includes changes due to illness or other personal reasons.

5. Cancellation, delays and changes to Your Itinerary

5.1 Although we reserve the right to cancel, delay or alter a Cruise for operational reasons, we will generally not cancel or consolidate a Cruise due to lack of passenger numbers. However, if minimum passenger numbers are not met, we reserve the right to limit the facilities, amenities and activities available on the Cruise Vessel.

5.2 We will use reasonable endeavours to make any decision to cancel or delay a Journey or Cruise, and to notify You of that decision, at least 60 days prior to the scheduled Journey Departure Date.

5.3 If We cancel or delay the departure of a Journey by 7 days or more, for whatever reason, before departure for any reason other than as a result of the occurrence of a Force Majeure Event:

- (a) We will use reasonable endeavours to offer You the closest available Journey or Cruise departure. If the proposed alternative Journey or Cruise is:
 - (i) cheaper than Your original Journey Price, We will refund the difference to You; or
 - (ii) more expensive than Your original Journey Price, You must pay the difference to Us;
- (b) if You accept the proposed alternative Journey or Cruise, Your Itinerary will be amended accordingly and We will give You an updated Itinerary;
- (c) if You do not accept the proposed alternative Journey or Cruise within 7 days of being notified by Us of the alternative, We will cancel Your Booking and terminate the Contract, refund to You all monies paid directly to Us and will have no further liability to You; and
- (d) We are not liable for any third party costs You may incur, which We have not booked on Your behalf, for example airfares or other arrangements booked independently through or paid to a travel agent.

5.4 If, as a result of the occurrence of a Force Majeure Event, We;

- (a) cancel or delay the departure of a Journey We will:
 - (i) cancel Your Booking and terminate the Contract;
 - (ii) issue You with a Future Travel Credit to the value of all monies You have paid directly to Us for the cancelled Booking; and
 - (iii) not refund any amounts You have paid directly to Us for the cancelled Booking; and
- (b) cancel a Journey after commencement We will:
 - (i) cancel Your Booking and terminate the Contract; and
 - (ii) not refund any amounts You have paid directly to Us for the cancelled Booking;
- (c) if We issue a Future Travel Credit to You:
 - (i) You may apply It towards any future booking for a Journey with a Journey Departure Date within 24 months after the date on which We cancel Your Booking subject to availability and any Future Travel Credit capacity limits applicable to your selected Journey or cruise;
 - (ii) If your original booking was for an ocean or river cruise, the Future Travel Credit can only be applied to available ocean and river cruises within the Scenic Group (Scenic Luxury Cruises & Tours, Emerald Cruises and Evergreen Cruises & Tours).
 - (iii) If your original booking was for a land Journey, the Future Travel Credit can be applied to available land Journeys or ocean and river cruises within the Scenic Group (Scenic Luxury Cruises & Tours, Emerald Cruises and Evergreen Cruises & Tours).
 - (iv) You may, with our prior written consent, which we will not unreasonably refuse, transfer it to another person to apply towards any future Booking for a Journey with a Journey Departure Date within 24 months after the date on which We cancel Your Booking;
 - (v) its use for any future booking is subject to availability;
 - (vi) It cannot be applied against stand-alone products or upgrades from third parties or Service Providers (as defined in clause 2) in conjunction with the standard Journey itinerary
 - (vii) It is not redeemable in whole or in part for cash and will expire to the extent It is not used; and
 - (viii) You (or the person to whom It is transferred) must pay any shortfall between the value of the Future Travel Credit and the Journey Price for the new Booking in accordance with clause 3 of these Conditions.

5.5 We will use reasonable endeavours to provide the Journey You have booked in accordance with Your Itinerary. However, due to the nature of travel, it may not always be possible for Us to adhere strictly to Your Itinerary and the Operator may need to make alterations to the Journey or Your Itinerary, before or after the commencement of the Journey. Where, due to circumstances outside the Operator's control, We are unable to provide the Journey in accordance with Your Itinerary, We will use reasonable endeavours to:

- (a) give You reasonable notice of any alterations, but there may be circumstances beyond Our control in which

alterations will be required with little, or no, advance notice; and

(b) provide or arrange appropriate alternative activities, transport and accommodation as required.

5.6 The circumstances in which Your Itinerary or the Journey may be altered include:

- (a) tidal waters or high or low water levels in any ocean or sea, river, canal, bay, cove or port;
 - (b) port closures or port restrictions due to weather or other operational reasons
 - (c) lock closures, unscheduled vessel maintenance or other operational reasons;
 - (d) road, river, ice or weather conditions;
 - (e) national or local holidays affecting the closure of public buildings or attractions;
 - (f) Force Majeure Events;
 - (g) emergency events, accidents, injuries or other incidents involving You or other passengers; and
 - (h) any other event beyond Our control.
- 5.7** Alterations to Your Itinerary or the Journey may include:
- (a) substitution of vessels for part or the whole of a Journey;
 - (b) cabin changes on a vessel;
 - (c) substitution of another port or anchor location;
 - (d) additional embarkations and disembarkations;
 - (e) substitution of alternate transportation, including the use of motor coaches;
 - (f) substitution of hotel accommodation for accommodation on a vessel;
 - (g) alterations to arrival and departure times;
 - (h) alterations to sightseeing activities; and
 - (i) reductions or increases in the time spent at a location.

5.8 If We or the Operator substitute any vessel, motor coach or accommodation under this clause 5, We or they will use reasonable endeavours to provide You with a substitution of equivalent specification or quality, but some services and facilities may not be available for all substitute arrangements.

5.9 Any changes to Your Itinerary will be notified to You:

- (a) if prior to Your Journey Departure Date, by phone, email or post using the Guest Contact Details or via Your travel agent; or
- (b) if during Your Journey, personally by Your Cruise Director or Tour Director.

5.10 To the maximum extent permitted by law, You agree that We are not liable to You for, and You release Us from, any cost, claim, loss, damage or expense whatsoever arising either directly or indirectly in connection with any alteration to Your Itinerary or substitution carried out in accordance with this clause 5, including without limitation any:

- (a) claim for distress, disappointment or loss of enjoyment arising from the alteration;
- (b) additional personal expenses incurred by You, including for food, beverages and personal items; or
- (c) costs associated with any other travel arrangements affected by the changes, including any costs and expenses incurred by You for cancelling or changing those other arrangements or arising from a failure to meet a connection.

6. Your Journey obligations

6.1 For the comfort and safety of You and Your fellow passengers and other people, You must follow the Captain, Discovery Team Leader and Cruise Director's instructions at all times.

6.2 If We, the Captain, Discovery Team Leader or Cruise Director or Our staff or any Service Provider consider You are negatively affecting Your own health, safety or enjoyment, or that of other passengers, including by refusing to comply with instructions of the Captain, Discovery Team Leader or the Cruise Director, We may terminate the Contract and withdraw You from the Journey with immediate effect. If it is reasonably practicable to do so, the Captain, Discovery Team Leader or Cruise Director will provide a warning to You and allow You an opportunity to rectify Your behaviour before We withdraw You from the Journey.

6.3 If You are withdrawn from the Journey under clause 6.2, You must make Your own travel and other arrangements at Your own expense and We are not liable to You for any loss, cost or damage You may suffer or incur.

6.4 You must have a valid passport with an expiry date of at least six (6) months after the last scheduled day of Your Journey.

6.5 You must ensure that You obtain prior to the Journey Departure Date all required entry visas for all countries to be visited during the Journey, as failure to obtain correct documentation may affect Your participation in certain shore excursions and entry to certain countries during the Journey.

6.6 If You do not have the correct visa or other documentation necessary to enter a country or participate in any aspect of a Journey ("Documentation"):

- (a) We will not refund to You all or any portion of the Journey Price; and
- (b) You will be responsible for any costs You incur as a result of Your failure to obtain the required Documentation, including any costs associated with re-joining the Journey.

6.7 If You are unhappy with something that does or does not happen on Your Journey, You must first use all reasonable endeavours to negotiate with Us in good faith to settle the dispute before commencing proceedings in any court or tribunal. In the first instance You should raise Your concern with the Tour Director or the Cruise Director as soon as reasonably practicable, as it may be possible for them to take steps to resolve Your concern with minimal delay.

7. Notification of General Risks

7.1 You acknowledge and agree that there are general risks associated with travelling, which are beyond Our control and We are not liable to You for any loss, cost or damage You may incur as a result of these general risks. Such general risks include:

- (a) Journey variations or interruptions caused by road, river, ocean or sea, ice or weather conditions; national or local holidays affecting the closure of public buildings and attractions; Force Majeure Events; tidal water levels, high water levels; low water levels; flooding; unfavourable ice, or weather conditions; port or lock closures; unscheduled vessel or vehicle maintenance; or any unforeseen events or emergency situations
- (b) changes to the Journey and Your Itinerary in the circumstances described in clause 5.6 of these Conditions;
- (c) forces of nature; illness; flight schedule changes or cancellations; loss of luggage; epidemics or pandemics; political unrest; accidents; acts of terrorism or other criminal acts; changes to government visa or travel requirements; or
- (d) other circumstances beyond Our control.

7.2 You must make Your own enquiries regarding Your Journey, including being aware of any relevant government travel safety warnings.

8. Liability

8.1 Nothing in these Conditions or the Contract operates to exclude, restrict or modify the application of any provision of the Competition and Consumer Act 2010 (Cth), including the Australian Consumer Law, or any equivalent State or Territory legislation, the exercise of a right conferred by such a provision, or any of Our liability for breach of a guarantee, condition or warranty implied by such a provision, where it is unlawful to do so. All exclusions and limitations of Our liability under the Contract must be read subject to this clause.

8.2 You acknowledge and agree that We accept no responsibility and will not be liable to You (or any third party) for any loss, cost or damage (including loss of enjoyment) suffered directly or indirectly in connection with:

- (a) any Journey risks or other aspects of the Journey disclosed to You in the Contract;
- (b) any change to Your Itinerary or delays in departure or arrival times of aircraft, vessels or otherwise during the conduct of the Journey;
- (c) any loss or damage to Your baggage or belongings;
- (d) any personal injury or death resulting from the acts or omissions or negligence of any third parties providing goods or services to You during the Journey, including air carriers, hotels, shore excursion operators, restaurateurs, transportation providers and medical personnel; or
- (e) any disappointment or loss of enjoyment due to circumstances outlined in the Contract or otherwise beyond Our control.

8.3 Subject to clause 8.1, but despite any other provision of the Contract, and to the extent permitted by law, Our maximum liability to You or any third party (including any claims of negligence by Us) is limited to the Journey Price You have paid to Us.

8.4 To the maximum extent permitted by law and subject to clause 8.1, You acknowledge and agree We are not liable to You, under any circumstances, for any loss of enjoyment, opportunity, profit, savings, revenue or interest or any other consequential or indirect, incidental, special or punitive loss, damage or expenses.

8.5 To the extent permitted by law, all express or implied warranties, guarantees, representations, or terms are expressly excluded. Where the law implies any guarantee, condition or warranty which cannot be excluded, Our liability to You for breach of such an implied guarantee, condition or warranty is limited, to one or more of the following at Our option:

- (a) in the case of goods: the repair of goods, replacement of goods, the supply of equivalent goods or the cost of repair, replacement or supply of equivalent goods; or
- (b) in the case of services: supplying the services again or payment of the cost of supplying the services again.

8.6 Subject to clause 8.1, You acknowledge and agree that where Your Journey, any part of Your Journey, accommodation, flights or any other good or service are not directly provided by Us, but is provided by a Service Provider, in the event of any dispute or claim including for loss, damage, breach of contract or negligence arising from the conduct of the Service Provider, You must pursue Your claim directly against the relevant Service Provider.

9. Force Majeure Event

9.1 If the performance of Our or a Service Provider's obligations is prevented, delayed or materially affected by the occurrence of a Force Majeure Event, those obligations are suspended for the duration of the Force Majeure Event.

9.2 We may cancel or delay a Journey as a result of the occurrence of a Force Majeure Event which prevents, materially affects or delays, or which we reasonably determine is likely to prevent, materially affect or delay, Our or a Service Provider's ability to provide the Journey:

- (a) in accordance with the Contract; or
- (b) to a standard which We consider will meet the reasonable expectations of the Journey participants.

9.3 We will use reasonable endeavours to give You notice as soon as reasonably practicable of the occurrence of a Force Majeure Event that prevents, materially affects or delays, or is likely to prevent, materially affect or delay, the performance by Us or a Service Provider of our obligations under the Contract.

9.4 If we cancel or delay a Journey in the circumstances described in clause 9.2:

- (a) to the maximum extent permitted by law, Your sole and exclusive rights and remedies will be those set out in clause 5.4 of these Conditions;
- (b) You acknowledge and agree that We are not otherwise

Terms & Conditions

liable for any delay or failure by Us or a Service Provider to perform Our obligations under the Contract, resulting from or as a consequence of the Force Majeure Event.

10. Privacy and Data Protection

10.1 In order for Us to process Your Booking and provide the Journey to You, You will need to provide to Us, and We will need to use Personal Information. We will need to provide Your Personal Information to Service Providers, as well as customs and immigration authorities. We may also provide Your Personal Information to security and credit checking organisations. Some of the persons to whom We provide Your Personal Information are located overseas, including in countries that may not provide the same level of protection of Personal Information as Australia. By making a Booking You give Us Your consent to use and disclose Your Personal Information in the manner described in this clause 10.1.

10.2 We may also use Your name and the Guest Contact Details for marketing purposes, unless You tell Us that You do not want Us to do so. You may do this by contacting the Customer Service Contact Address.

10.3 We will otherwise deal with Your Personal Information in accordance with Our privacy policy, which can be found on Our Website or provided on request.

11. General Provisions

11.1 We may only waive a right or remedy created under these Conditions in writing. Our delay in exercising a right or remedy does not constitute a waiver of that right or remedy, nor does any waiver by Us (either wholly or in part) operate as a subsequent waiver of the same or any other right.

11.2 The Contract is governed by the laws in force in New South Wales, Australia.

11.3 The parties submit to the non-exclusive jurisdiction of the courts of New South Wales, Australia and any courts competent to hear appeals from those courts.

11.4 Any term which is, by its nature, intended to survive termination of the Contract survives termination.

11.5 In these Conditions, unless the context otherwise indicates a contrary intention:

- (a) headings are for convenience only and do not affect interpretation;
- (b) singular includes the plural and vice versa;
- (c) a reference to a party includes its successors, permitted assigns, administrators and substitutes;
- (d) where a word or phrase is defined, its other grammatical forms have the corresponding meaning;
- (e) the word 'include' in any form is not a word of limitation;
- (f) no rules of construction apply to Our disadvantage on the basis that these Conditions or the Contract were prepared by Us;
- (g) a reference to a natural person includes their personal representatives; and
- (h) a reference to a body (including institute, association or authority) which ceases to exist or whose powers or functions are transferred to another body is a reference to the body which replaces it or which substantially succeeds to its powers or functions.

11.6 The Journey Brochure is valid for Journey Departure Dates during the Validity Period unless otherwise indicated in Your Itinerary, and supersedes all previous brochures.

12. Important notices about Your Journey

12.1 Journey Participation

(a) Special needs: We welcome You if You have a disability or other special need, provided You are accompanied by a companion capable of providing all the assistance You require. Please note that although We will use reasonable endeavours to provide You with all the activities on Your Itinerary, depending on Your disability, You may not be able to participate in every activity and the Captain, Discovery Team Leader or Cruise Director will have the right to refuse Your participation if the Captain, Discovery Team Leader or Cruise Director believes Your health and safety or the health and safety of any other person may be impacted by Your participation. You must advise Us (or Your travel agent) of any disability, medical condition or dietary requirement at the time of Booking.

(b) Facilities: It is important to note that:

- (i) for safety reasons, passengers in wheelchairs cannot be carried on boarding ramps (which may be steep due to water levels) whilst the vessel is tied up or at anchor, or on to motor coaches, tenders, Discovery experiences including but not limited to Zodiacs, kayaks and submersible; and
 - (ii) collapsible walkers may be taken onto tender vessels for transfer to shore for the included Journeying. Walkers are however unable to be taken on the zodiacs at any time due to space restrictions. The walkers will be stored in the guest's suite – there is no additional storage space on board.
 - (iii) guests must be able to walk up/down stairs in the event of an emergency to reach emergency evacuation points.
 - (iv) motorised scooters cannot be used on board
 - (v) wheelchairs and walkers can be carried in the luggage compartment of motorcoaches subject to space limitations.
 - (vi) embarking and disembarking the tenders, Zodiacs, kayaks and submersible are via a mud room/change room with steps leading to a marina platform and requires the ability to step into and out of these vessels unaided.
- (c) Our discretion:** We may, in Our absolute discretion, decline Your Booking if We are of the view that:
- (i) We cannot adequately provide for any or all of Your special needs;
 - (ii) Your health, safety or enjoyment, or that of any other

passengers attending the Journey may be at risk; or
(iii) You cannot or will not abide by any reasonable directions of the Captain, Discovery Team Leader or Cruise Director.

12.2 Cruises

If Your Journey includes a Cruise, the following provisions apply:

(a) Deckplan: The deck plan, cabin sizes, images, inclusions and cabin layout in the Journey Brochure are indicative only and may vary. Pictured representations of cabins or rooms in Journey Brochures are not drawn to scale. Suite dimensions within each category may vary in size depending on their location on each deck. Suite measurements are based on gross calculations and include internal technical spaces.

(b) Cruise Cabins: Your Journey Price is based on the Cabin category indicated in the Journey Brochure. Upgrades are subject to availability and will be at an additional cost.

(c) Port arrival and departure times: arrival and departure times are an indication only and are always subject to change without notice.

(d) Cruise Itinerary: we reserve the right to substitute or cancel scheduled ports of call which, in our sole judgement and discretion, is justified for any reason and to do so without liability for any loss whatsoever to guests as a result of said change(s).

(e) Photography: Our Journeys offer some of the most spectacular and beautiful photographic scenery in the world. However, We cannot guarantee that every scene or highlighted featured in a Journey Brochure or Itinerary will be available on each Journey. No refund or other compensation will be available for any resulting missed scene or photographic "opportunity".

(f) Smoking: Smoking is limited to designated smoking areas during Your Journey.

(i) You acknowledge that We may restrict smoking to specific times and locations during Your Cruise for the comfort of all passengers.

(ii) Smoking is not permitted on coaches or such other places as nominated by Us from time to time.

(iii) Although We will use reasonable endeavours to ensure there are opportunities for You to smoke during the Journey, We cannot guarantee such opportunities will be available.

(g) Noise, vibration and odour: While the Operators take reasonable steps to minimise noise, vibration and odours on the cruise vessels, You acknowledge and accept that some noise, vibration and intermittent odours may be experienced on vessels, and that We accept no responsibility, and will not be liable to You in relation to any such noise, vibration or odour.

(h) Medical Services:

(i) A medical centre is available onboard Scenic Eclipse and will be staffed according to the destination.

(ii) Due to the large number of passengers on board, We cannot provide a personal escort for medical visits.

(iii) We are not, and our Service Providers and the Operators are not, liable regarding the provision of any medical care You may require or choose to accept during your Journey.

(iv) You acknowledge that Antarctica, the Americas, Transatlantic crossings and the Arctic & Fjords regions are remote areas with limited medical facilities available.

(i) Currency and credit cards

(i) All purchases on board a charge to Your shipboard account. The on-board currency is the US Dollar.

(ii) Shipboard accounts may be paid by US Dollar or credit card.

(j) Wi Fi and Internet Service: Internet facilities are available on board up to a pre-determined limit per suite at no additional charge. Any additional usage will be charged to the guest's suite.

(i) Complimentary Internet service does not apply to any third-party suppliers.

(ii) Internet availability and quality may vary from country to country and can also be affected by technical issues, weather or unfavourable terrain and other factors outside Our control.

(iii) We do not guarantee the availability or quality of Internet connections or services.

(k) All-inclusive beverages: If Your Journey includes an all-inclusive beverage package, the following provisions apply:

(i) all standard beverages are included in the Journey Price whilst you are on board Scenic Eclipse. This includes champagne, beer, wine, soft drinks, fruit juices, specialty teas and coffee and standard spirits. It also includes daily replenishment of the suite minibars.

(ii) Selected items such as a very small number of rare, fine and vintage wines, champagnes and spirits are not included in the package and may be available at an additional charge.

(iii) Responsible service of alcohol is adhered to by all staff on board of all vessels and We reserve the right to refuse service.

(iv) The all-inclusive beverages package does not apply to any third-party suppliers, including in the circumstances contemplated in clause 5.7 of these Conditions.

12.3 Drones

(a) General prohibition: Unless provided by Us or an Operator as part of an organised activity during Your Journey, the use of Drones is strictly prohibited at all times on Your Journey.

(b) Legal restrictions: You should also be aware that, in addition to the prohibition in paragraph (a), the use of Drones is regulated or prohibited by law in many locations and unlawful use may result in arrest or prosecution by the

relevant authorities.

(c) Organised Activities: If We or an Operator allow You to operate a Drone as part of an organised activity during Your Journey, You must strictly comply with all instructions of the activity leader.

13. Additional Important Information

13.1 Air Travel and baggage

(a) Airfare Conditions

- (i) All airfares are subject to availability and conditions apply.
- (ii) Our reservations consultant will book an appropriate fare for Your Journey.
- (iii) Some discounted airfares have conditions which make them unsuitable to be used in conjunction with Our Journeys. Full details and conditions may be obtained from Our reservations consultant or Your travel agent. If You have any questions or concerns please contact Our reservations consultant or Your travel agent.
- (iv) Airfares booked as part of Your Journey will be through an appropriate route although may not be a direct flight; some included flights are unescorted. If You request a customised route or direct flight You will be responsible for all additional costs.
- (v) Depending on departure date and time of booking the required booking class for airfare offer may be too far in advance to book with the appropriate airline. If the required booking class is unavailable air surcharges may apply. The flight quote including air taxes and surcharges will be confirmed once all air sectors are booked and confirmed.
- (vi) Taxes are defined as all airline and government taxes and surcharges. Taxes are subject to change and will be advised at the time of flight reservation.
- (vii) All flights are subject to schedule changes and class downgrades as determined by the operating airline. You acknowledge and agree that We accept no responsibility and will not be liable to You for any costs associated with these changes.
- (viii) All airfares are subject to availability and scheduled for travel to meet the Journey Departure Dates set out in the Journey Brochure. Any requests outside of the Journey dates may incur seasonal surcharges as enforced by the airline.

(b) Airport Transfers

- (i) Airport transfers are only available on the first and last day of Your Journey and at times We designate. Transfers outside these times will be at Your expense and must be secured by Your own arrangements.
- (ii) Passengers who have purchased Our pre and post Journey hotel accommodation and airfares will be provided airport transfers to/from their hotel in the Journey start or end city only, on the day of the pre or post accommodation booking.
- (iii) If You do not book Your flights with Us, You must ensure Your flight details are provided to Us at least 60 days before the Journey Departure Date by:
 - (a) entering Your flight details at the trip personaliser on the Website; or
 - (b) contacting Us at the Customer Service Contact Address.
- (iv) No refund will be given for unused transfers. Transfers cannot be routed to other pick-up points or destinations.
- (v) If You miss the pre-booked transfer You will be responsible for making Your own way to the Journey departure point, at Your own expense.
- (vi) Unless expressly stated in Your Itinerary, airport transfers may be group transfers scheduled to coincide with multiple flight arrival and departure times. Private transfers, including VIP transfer are not available in all locations. Please enquire for further details.

(c) Carriers: The carriers (including air carriers, rail and sea carriers used in association with the Journeys) are not responsible for statements or features in Journey Brochures. The conditions of carriage of each carrier constitute a separate contract between You and the carrier and We have no responsibility in relation to contracts between You and the carriers and only act as agent in arranging services from the carriers.

(d) Luggage

- (i) Journey participants are entitled to one suitcase per person. Your suitcase must not exceed 76 x 53 x 28cms (30" x 21" x 11") and must not weigh more than 23kg (50lbs). All luggage must be stored in your suite; there are no additional luggage storage facilities available.
- (ii) Airline passengers should consult with their airline as size and weight restrictions may vary from airline to airline and according to the class booked.
- (iii) It is Your responsibility to ensure Your luggage complies with these requirements and You acknowledge that We, contracted carriers or Service Providers may elect not to carry overweight items.
- (iv) You will be responsible for any excess baggage charges.

13.2 Sightseeing, Excursions and Special Activities on Journey

- (a) Sightseeing:** Sightseeing in many historic villages, towns and cities can only be undertaken by walking Journeys as motorcoach access is not possible. Consequently, a reasonable level of fitness is required as the sightseeing Journey may involve steps and extensive walking over uneven surfaces.
- (b) Mountain Excursions:** Some Journeys include mountain excursions involving high altitudes. Please consult with Your doctor to ensure that You have an adequate level of fitness and are in good health before participating in these excursions.
- (c) Scenic Freechoice:** All Scenic Freechoice activities

and Scenic Freechoice Dining can be booked whilst on Journey with Your Cruise Director or Tour Director (unless otherwise stated) and are subject to availability, seasonal and operational factors. Some activities require a minimum or maximum number of participants to operate.

(d) Scenic Enrich: It may not always be possible to offer every Scenic Enrich activity in the Journey Brochure on Your Journey. Wherever possible, suitable alternatives will be provided without liability to You.

13.3 Passenger Requirements

(a) Special Diets: You must advise Us in writing of any and all special requests and dietary requirements at the time of Booking. We will make every reasonable effort to accommodate Your dietary requests but cannot guarantee that such requests can be met.

(b) Vaccinations: It is Your responsibility to ensure You have all required vaccinations for Your Journey and We recommend You refer to www.smarttraveller.gov.au for full details and also consult Your doctor.

(c) Medical Conditions: We strongly recommend a visit to Your doctor prior to Your Journey.

(d) Solo Passengers and Single Accommodation

(i) Prices quoted in Journey Brochures are on a twin share basis. If Your Booking is not a twin share booking We will notify You of the applicable single supplement rate (Single Supplement Rate), and You must pay the Single Supplement Rate for the Journey, at the time of Booking.

(ii) A limited number of single suites are available at a Single Supplement Rate for each Journey.

(e) Young Passengers:

(i) Passengers under the age of 18 years (as at the Journey Departure Date) must be accompanied by an adult and share their accommodation with an adult.

(ii) Children under the age of 12 years are not encouraged (with the exception of Christmas Journeys and Cruises) and are accepted or rejected at Our sole discretion.

13.4 Maps, Pictures and Images

(a) Maps: Maps or Journey depictions contained in Journey Brochures or any other brochures We issue are intended as an indication only and should not be relied upon as the actual route to be taken during the Journey.

(b) Images: All images in Journey Brochures represent typical scenes and descriptive detail for each Journey, however it is possible that the particular subject matter may not be seen or experienced on Your Journey. Also, some pictures may have been digitally enhanced.

13.5 Hotel Accommodation

(a) Substitution: We may substitute hotel accommodation of a similar standard in the place of the advertised hotel due to hotel availability issues. Any changes will be notified once confirmed with the hotel.

(b) Responsibility: Although We have taken reasonable steps to secure the most suitable hotel accommodation in the area of the Journey, We are not liable to You for the quality, size or fitness of hotel rooms.

13.6 Flexible Booking Plan

Our Flexible Booking Plan has been introduced for your complete peace of mind. We understand you may need to adjust your plans, so we're offering the flexibility to change your travel arrangements or re-book for a more suitable time if needed.

Our Flexible Booking Plan allows you to defer your booking to an alternative date, or cancel your journey, up to 90 days prior to departure, less third-party fees. We will provide you with a Future Travel Credit to use on an alternate tour/cruise, which is valid for 24 months.

13.7 Platinum Protection Plan

The Platinum Protection Plan ("PPP") is available for new river and ocean cruising bookings for travel after 1 January 2022 for Scenic and Emerald Cruises ("Eligible Booking"). By adding this plan, you are covered if you are unable to travel due to health reasons, or your travel plans are impacted by COVID-19, up to 31 days prior to departure with a 100% refund (less airline cancellation fees and PPP cost), or a 70% refund between 15 and 30 days prior to departure (less PPP cost).

The PPP must be purchased together with the Eligible Booking at time such booking is made and may not be added at a later date. The PPP is provided at a cost of \$395 per person per river cruise, \$495 per person per cruise on Emerald Cruises yacht cruising and \$595 per person per cruise on Scenic Eclipse voyages ("PPP Fee").

The PPP is not available on Oberammergau, Amazon and Galapagos cruises or land tours and the PPP is also not available to new bookings using a Future Travel Credit.

14. Contact Details

14.1 To make, change or cancel a Booking or to make any enquiries regarding a Booking or to otherwise give Us any notice in accordance with the Contract, You should contact Our customer service centre as follows:
Email: info@scenic.com.au

Telephone: 138 128

Postal: PO Box 807, Newcastle, NSW 2300 Australia

This is the Customer Service Contact Address.

14.2 Our customer service centre is open from 7.30am to 6.00pm Monday to Friday and 9.00am to 1.00pm

Saturday (excluding public holidays in New South Wales) (Sydney time). Although We hope You won't need it, Our after-hours emergency number when calling in Australia is freecall 1800 620 105. Other emergency contact details are included in Your travel documents.

14.3 If You need to contact Us during Your Journey, We recommend that if it is practicable to do so, in the first instance You should try to contact the Discovery

Leader, Tour Director or Cruise Director. Depending on

the purpose of Your contact, they may be able to assist You, but otherwise they may direct You to contact Our customer service centre.

14.4 We will use the Guest Contact Details if We need to contact You before the Journey Departure Date. It is therefore very important that You keep the Guest Contact Details up to date and notify Us immediately of any changes. To update Your Guest Contact Details, please contact Us at the Customer Service Contact Address.

15. Destination Specific Terms

15.1 We reserve the right to charge a per person fuel supplement in the event that the Brent* Crude oil increases materially any time after 28 February 2019 up to and including the day of embarkation. *Brent crude oil prices are published on www.Bloomberg.com.

15.2 Not later than 15 days before the Journey Departure Date, expectant mothers are required to supply a medical certificate establishing their fitness for travel at the time they are due to travel. The certificate must be signed by a medical practitioner, include the estimated delivery date and be dated not earlier than 30 days before the Journey Departure Date. In any event, We are unable to accommodate, and will not allow to participate in the Journey, any woman who has entered her twenty-fourth (24th) week of pregnancy prior to the Journey Departure Date, or who will do so at any time during the Journey, and, to the maximum extent permitted by law, will not be responsible or liable for any complication relative to any pregnancy during the entire duration of the Cruise or thereafter. Additionally, airlines may have restrictions that may differ from Ours. Please contact your travel professional or airline for details.

15.3 Unscheduled Embarkation / Disembarkation: International cabotage laws may prohibit guests from embarking or disembarking their voyage in any port except the main scheduled embarkation and disembarkation ports. Only those guests with a medical emergency may be allowed to embark or disembark the Cruise Vessel at an unscheduled embark / disembark port. If an unscheduled embarkation or disembarkation is permitted as a result of an emergency, those guests may incur additional charges intended to cover any fine or penalty levied against Scenic and any other additional costs. Such additional costs will be added to the guests' on board account prior to disembarking.

15.4 We strongly recommend that You take out comprehensive travel insurance with a reputable insurance company to cover You against risks associated with Your Cruise/Journey including cover for loss of luggage, medical expenses, costs and expenses incurred due to cancellations, delays or other disruptions or medical evacuation in remote areas.

15.5 You must complete a mandatory medical questionnaire (to be provided 90 days prior to departure) between 90 and 60 days prior to the Journey Departure Date and must be returned to Scenic not later than 60 days prior to the Journey Departure Date. Any medical certificate issued earlier than 90 days before the Journey Departure date will not be accepted. Any guest who has not completed and returned their medical certificate will not be cleared for embarkation and will not benefit from any refund.

15.6 Service Animals: Due to the sensitive environments and regulatory regulations of the region travelled to, we are unable to accept service animals on the Cruise.

15.7 Antarctica, the Americas, Transatlantic crossings, Arctic & Fjords and other remote Regions:

(a) Highlights and wildlife encounters as outlined in the Itinerary are possible experiences only and cannot be guaranteed. Your Captain, Discovery Team Leader or Cruise Director will determine opportunities for exploration taking into account the prevailing weather, wildlife activity and ice conditions.

(b) Laundry and internet facilities may be limited whilst cruising in these regions.

(c) Complimentary Polar Parka and special Polar boot use is included for All Cruises to Antarctica, South Georgia and the Arctic & Fjords.

(d) As a condition of travelling to Antarctica or Arctic & Fjords on a Journey, you must provide to Us, at least 10 days before the Journey Departure Date:

(i) evidence that You hold comprehensive insurance, including medical evacuation coverage; or
(ii) evidence that You have access to available funds of not less than \$150,000 USD; or

(iii) a bond or other security, satisfactory to Us, in Our absolute discretion, to cover the cost of medical evacuation in the event of a medical emergency

(c) If a charter flight from any starting point to the point of embarkation for the ship voyage is delayed due to adverse weather conditions, Scenic Cruises and Tours will attempt, for a period of up to 72 hours from the proposed departure time of the charter flight, to arrange a later charter flight. We will attempt to do so at no extra charge to you, but if an additional charge does apply, you will be liable to pay that additional charge.

15.8 Discovery Experiences: a reasonable level of mobility is required to participate in most discovery experiences. Specific discovery experiences will be advised on full release. Discovery experiences including Zodiac, kayak, helicopter, e-bikes, submersible and snorkeling are subject to regulatory approval and prevailing weather, marine and ice conditions and may be cancelled at short notice. We cannot guarantee their availability, even if you have made an on-board booking. Discovery experiences can be booked whilst on Cruise with Your Cruise Director or Discovery Team

Leader (unless otherwise stated) and are subject to availability, seasonal and operational factors. Some activities require a minimum and maximum number of participants to operate. We reserve the right to terminate, Your participation in a discovery experience if the Cruise Director, Tour Director or Discovery Team Leader reasonably considers that your continued participation poses a risk to the health or safety of You or any other person or You refuse to comply with all reasonable directions of the Cruise Director, Tour Director or Discovery Team Leader or any guide or operator conducting the experience.

15.9 Videography and Photography:

(a) We may capture photographs and video footage throughout the Journey for the purposes of compiling a video which features some of the highlights and activities of the Journey (Journey Video). Although We will use reasonable endeavours to ensure that the photographs and video footage captured are general in nature and do not focus on any specific individual, You acknowledge that We may capture photographs and video footage of You throughout the Journey.

(b) Subject to clause 14.8(c), the Journey Video will be prepared and made available online to You and all other passengers following the Journey. The Journey Video will be provided to You for personal use only and You must not use it for any commercial or unlawful purpose.

(c) We may decline to produce, or make available to You, a Journey Video in Our absolute discretion.

(d) You acknowledge and agree that, despite clause 15.8(b) of these Conditions, Scenic has no ability to restrict or control the further publication or distribution of the Journey Video by other passengers.

(e) If You do not wish to appear in the Journey Video, You must inform Us at the commencement of the Journey by completing and returning to reception on the Cruise Vessel an 'opt-out' form, in which case we will use reasonable endeavours to ensure you do not appear, or are not able to be identified, in the Journey Video.

(f) You acknowledge and agree that We may use the Journey Video (and any still images from it) for marketing, training and promotional purposes and you waive any right to claim any payment or other compensation for such use.

16 Offer Conditions

16.1 All prices stated are per guest based on double occupancy and are inclusive of cruise fare, taxes, fees & port expenses. Fares are in Australian dollars.

16.2 All savings amounts are included in the fares shown. All offers are capacity controlled and may be modified or withdrawn at any time without prior notice. Other restrictions may apply. Scenic reserves the right to correct errors.

16.3 Scenic Select Savings (SSS) and Scenic Select Bonus Savings (SSBS) Offers: Strictly limited suites available on select departures and suite categories, subject to availability and until sold out. Offers and discounts are non-transferable, non-refundable and cannot be redeemed for cash or future travel credits. Offers are valid for new bookings only, cannot be combined with any other offer, is subject to availability and may be withdrawn at any time.

16.4 Scenic Select Savings and Scenic Select Bonus Savings Offers are available until sold out or withdrawn. Strictly limited suites available on set departures and is subject to availability.

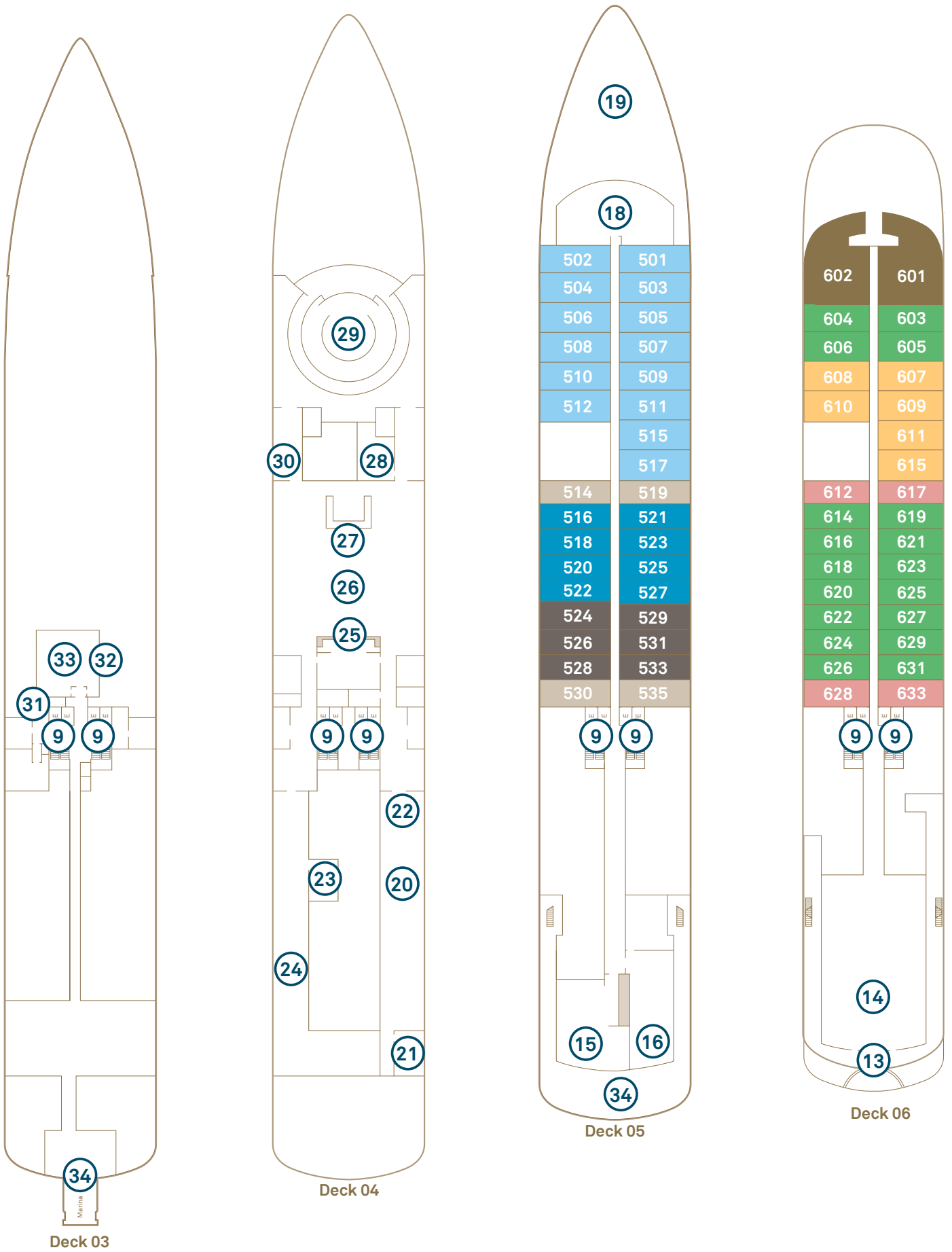
16.4 (a) *Scenic Select Savings offer of up to \$14,000pp* is based on per person, twin share in AUD and is valid for new bookings until sold out. All offers are valid for travel from August 2023 to September 2024, strictly limited, available on select departure dates and suites, subject to availability. A non-refundable deposit of 10% is due within 7 days of booking. Full payment within 7 days is due 10 months prior to departure. Once sold out or if full payment is not received the best available offer will apply. See our website for full offer terms and conditions.

16.4 (b) Must be paid in full 10 months before departure to qualify for this offer. If booking is made within 10 months of departure, full payment is due within 7 days of booking. Offer available until sold out or withdrawn. Once sold out or if full payment is not received the standard Earlybird offer or best available offer will apply.

16.4 (c) In addition to Scenic Select Savings, receive Business Class Flights up to the value of \$8,000pp+ on Spa Suites or higher, or Economy Class Flights up to the value of \$3,000pp+ on Verandah Suites on selected departures. Airfare offer is based on departures from selected ports within Australia and are subject to availability. Alternate Air Credit available. Offer available until sold out or withdrawn. Strictly limited suites available on set departures and subject to availability. See our website for full offer terms and conditions.

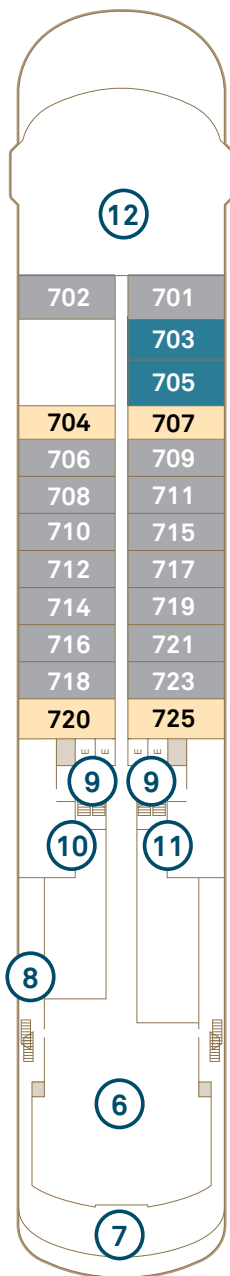
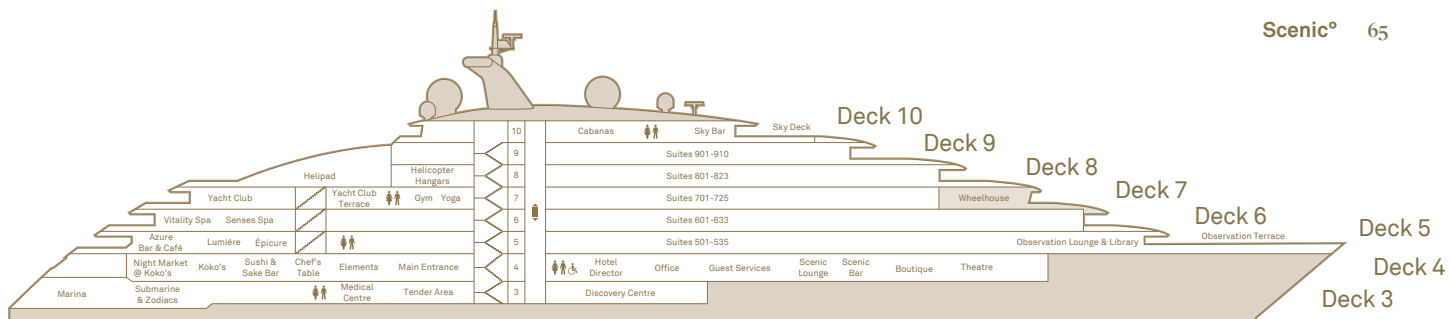
16.4 (d) All flights offers are based on departures from Australia and are subject to availability. Offers are with an airline of our choice and in a particular class of our choice. If that airline/class is not available, a surcharge may apply. Flights must be booked by Scenic. All airfare deals are subject to availability and scheduled for travel to meet the brochure journey departure dates. Any requests outside of the journey dates may incur seasonal charges as enforced by the airline. If you do not wish to book flights through Scenic, an alternative Air Credit is available.

16.5 For full terms and conditions of each offer, please refer to Scenic.com.au/terms-and-conditions

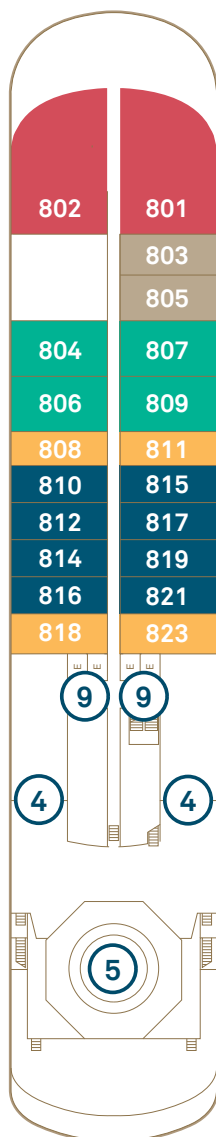


Deck Plan

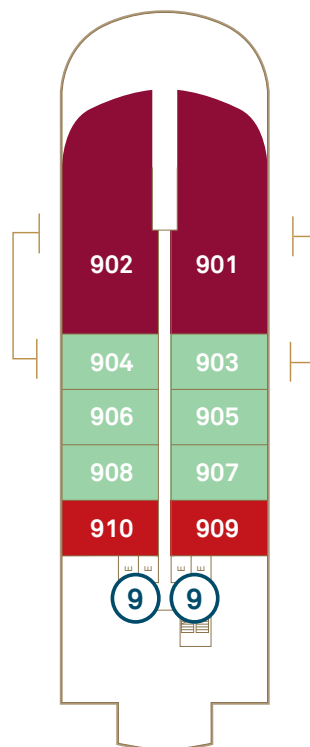
- | | | | | |
|-----------------------------|-----------------------|--------------------------------|--------------------------|------------------------------|
| ① Sky Bar | ⑧ Hanging Chairs | ⑮ Lumière | ⑳ Sushi @ Koko's | ㉑ Theatre |
| ② Sun Deck Pool | ⑨ Elevator | ⑯ Azure Bar & Café | ㉒ Chef's Table@ Elements | ⑳ Marina entrances |
| ③ Cabanas | ⑩ Yoga & Pilates room | ⑰ Chef's Garden @ Épicure | ㉓ Elements | ㉑ Medical centre |
| ④ Helicopter hangars | ⑪ Gym & fitness area | ⑱ Observation Lounge & Library | ㉔ Guest Services | ㉒ Self-service guest laundry |
| ⑤ Helipad | ⑫ Wheelhouse | ⑲ Observation Terrace | ㉕ Scenic Lounge | ㉓ Discovery Centre |
| ⑥ Yacht Club | ⑬ Spa Vitality Pool | ㉖ Koko's Asian Fusion | ㉔ Scenic Bar | |
| ⑦ Yacht Club outdoor dining | ⑭ Senses Spa | ㉗ Night Market @ Koko's | ㉕ Boutique | |



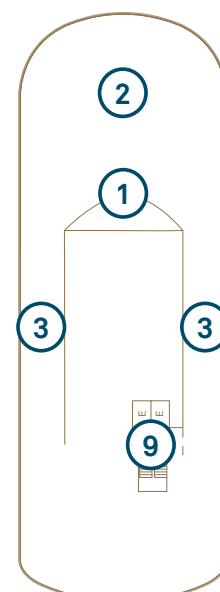
Deck 07



Deck 08



Deck 09



Deck 10

Scenic Eclipse

Built 2018 | Passengers 200/228 | Suites 114 | Crew 192/176 | Length 168 metres | Gross Tonnage 17,085 | Speed 17 knots

Suite Categories

| Deck 5 | | Deck 6 | | Deck 7 | | Deck 8 | | Deck 9 | |
|--------|---|--------|---|--------|---|--------|---|--------|---|
| DD | Grand Deluxe Verandah 38-40m ² | GP | Grand Panorama 105m ² | BD | Grand Deluxe Verandah 38-40m ² | P | Panorama 110m ² | OT | Two-bedroom Penthouse 240-245m ² |
| DB | Deluxe Verandah 32-34m ² | CD | Grand Deluxe Verandah 38-40m ² | BA | Deluxe Verandah 32-34m ² | S | Spa Suite 46-50m ² | OP | Owner's Penthouse 190-195m ² |
| DA | Deluxe Verandah 32-34m ² | CA | Deluxe Verandah 32-34m ² | B | Verandah 32m ² | AD | Grand Deluxe Verandah 38-40m ² | SB | Spa Suite 46-50m ² |
| D | Verandah 32m ² | C | Verandah 32m ² | | | AA | Deluxe Verandah 32-34m ² | SA | Spa Suite 46-50m ² |
| | | | | | | A | Verandah 32m ² | | |

*Suites 901 & 903 and 902 & 904 connect as Two bedroom Penthouse Suite. The deck plan and suite layout images are an indication only and may vary between ships. Suite measurements are approximate, and those in same category may vary in size.



More Scenic Eclipse Brochures

Worldwide Discovery Voyages

Australia, Indonesia & The Pacific

Scenic Eclipse Worldwide Cruise Calendar

Contact your local Scenic Travel Advisor or call

138 128

Scenic Offices

Australia

25 Watt Street
Newcastle
NSW 2300
info@scenic.com.au
scenic.com.au

New Zealand

P 0800 441 611
info@scenicnz.com
scenicnz.com

Canada

Suite 1025
401 West Georgia Street
Vancouver BC V6B 5A1
P 1 866 689 8611
info@scenic.ca
scenic.ca

USA

Suite 625-S
4000 Hollywood Blvd.
Hollywood, FL 33021
scenicusa.com

UK

4 Piccadilly Place
Piccadilly
Manchester M1 3BN
P 0161 236 2444
info@scenic.co.uk
scenic.co.uk

EMEA

Scenic Cruises
International GmbH
Wallbrunnstr. 24
D-79539 Lörrach
info@scenic.eu
scenic.eu

Scenic Tours Pty Ltd trading as Scenic. ABN 85 002 715 602

